



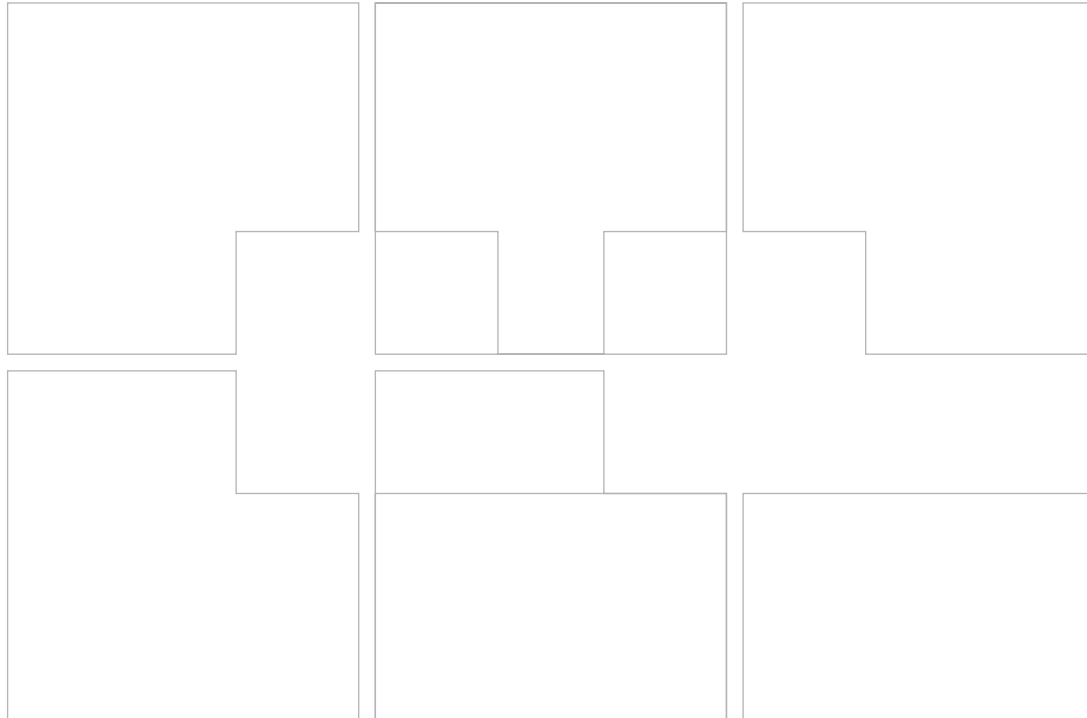
Doppler
www.doppler.gr



Doppler
Moving
with options

Cabin model

Epoxy
High quality, simplicity
and functionality
created in one, for all



CABIN MODEL	EPOXY SERIES
FROM	1.25mm STEEL THICKNESS COLD ROLLED STEEL SHEET
IDENTITY	UPON-CABIN-DIMENSIONS PANELS SIZE FIREPROOF
STAND-OUT FACTOR	POWDER COATED OR LIQUID PAINTED STEEL FOR SIDE WALLS AND PERIPHERALS
ADVANCED FEATURE	BESPOKE INTERIOR UV PRINTING
MADE IN	1 LIQUID PAINTING OVEN 35.5m2 1 POWDER COATING OVEN 235m2
CUSTOMIZATION OPTIONS	ENTIRETY OF RAL COLOR SYSTEM
PERIPHERALS	STAINLESS STEEL CORNERS SKIRTING
CONFORMITY	EN 81-20/50

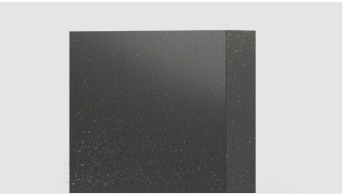


WALLS STEEL W5.8 9016 TRAFFIC WHITE PERIPHERALS SKIRTING STEEL W5.8 9016
TRAFFIC WHITE / FALSE CEILING A8.23 FC23 W4.2 SUPER MIRROR N8 / HANDRAIL A5.3
HR4 W4.1 SATIN/HL/SB/N4 / FLOOR F2.3 PF3 VENUS

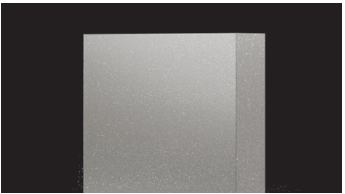
CABIN MODEL:
EPOXY

SIDE WALLS: W5 POWDER COATING

PERIPHERALS: W6 LIQUID PAINT (METALLICS)



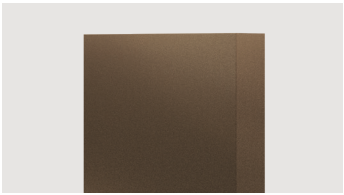
W5.1
PP210 / BLACK SILVER/ SP



W5.2
PP210 / 9006 / SP



W5.3
PP200 / GOLDEN BRONZE



W5.4
521 CARAVAN SAHARA



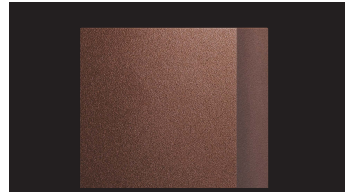
W5.5
7032 PEBBLE GREY



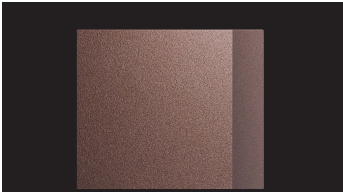
W5.6
7035 LIGHT GREY



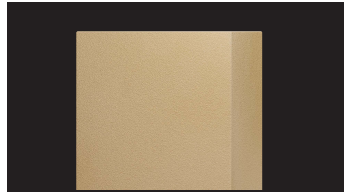
W5.7
PP200/ RAL 8011



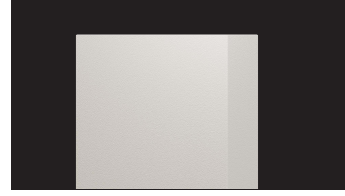
W5.8
PP210 / FEROX DARK



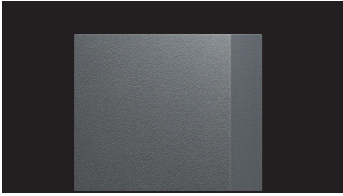
W5.9
PP210 / FEROX LIGHT



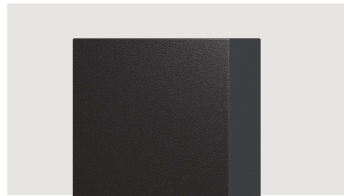
W5.10
PP200 / REGAL GOLD



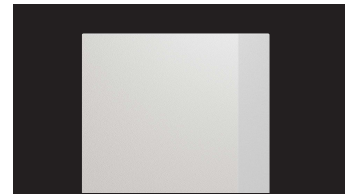
W5.11
PP600 / RAL 1013



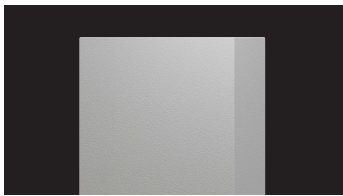
W5.12
PP600 / RAL 7016



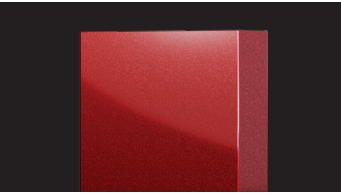
W5.13
RAL 9005



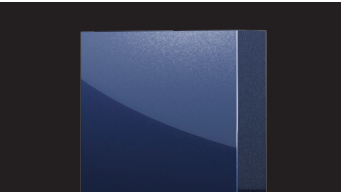
W5.14
RAL 9016



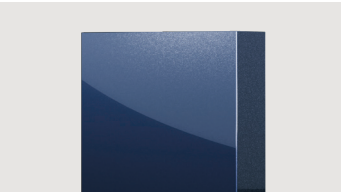
W5.15
RAL 7042



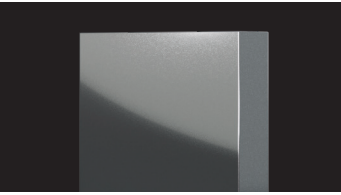
W6.1
450-M SPICY RED



W6.2
590-M ROYAL BLUE



W6.3
630-M NAVY BLUE



W6.4
810-M GRIGIO



W6.5
750-M GRAFITE



W6.6
840-M ASH GREY

Color and Finish Disclaimer
Please be advised that the colors and finishes of products depicted in images, whether digital or printed, may differ slightly from the actual product. These variations may result from differences in monitor and device display settings, screen calibration, lighting conditions during photography, and printing processes.

While every effort is made to present product finishes and colors as accurately as possible, such representations are provided for reference only. We strongly recommend reviewing physical samples prior to making a final purchasing decision to ensure complete satisfaction.

Doppler shall not be held liable for any discrepancies between the visual representations of products and the actual items delivered.



WALLS STEEL W5.1 501 BLACK PERIPHERALS SKIRTING STEEL W5.8 9016 TRAFFIC WHITE
/ FALSE CEILING A8.23 FC23 W5.8 9016 TRAFFIC WHITE / HANDRAIL A5.1 HR2 W5.8
9016 TRAFFIC WHITE / FLOOR PLASTIC/VINYL CUSTOM PRINTING



ONLINE CABIN DESIGNER

ENTER OUR DIGITAL TRANSIT PORT
AND EXPERIENCE THE DESIGN
ON A DIFFERENT LEVEL.

BESPOKE AND FINE LIFT DESIGN STARTS
HERE, WITH US. GET IN TOUCH.

HEADQUARTERS & FACTORY
POLYKASTRO
INDUSTRIAL PARK
61200 GREECE
+30 23430 54000
INFO@DOPPLER.GR

ATHENS BRANCH
12 LASSANI ST.
12132 PERISTERI
ATHENS GREECE
+30 210 341 6210
INFOATH@DOPPLER.GR

THESSALONIKI OFFICE & SHOWROOM
5 GIALOPSOU EKTOROS ST.
56224 EVOSMOS
THESSALONIKI GREECE

+30 23160 10605

WWW.DOPPLER.GR

Color and Finish Disclaimer

Please be advised that the colors and finishes of products depicted in images, whether digital or printed, may differ slightly from the actual product. These variations may result from differences in monitor and device display settings, screen calibration, lighting conditions during photography, and printing processes.

While every effort is made to present product finishes and colors as accurately as possible, such representations are provided for reference only. We strongly recommend reviewing physical samples prior to making a final purchasing decision to ensure complete satisfaction.

Doppler shall not be held liable for any discrepancies between the visual representations of products and the actual items delivered.