

► **Range of Application**
Escalators

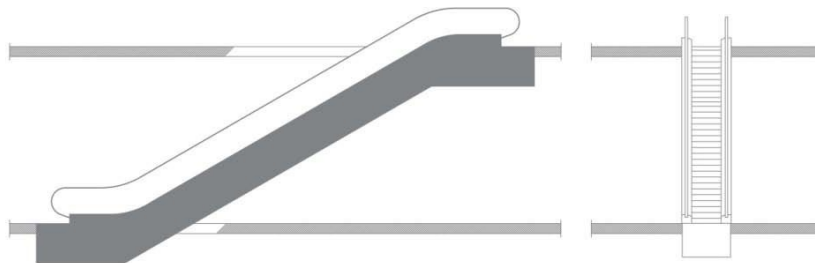
Contents

Arrangements.....	3
Solutions	5
XDM 30°/2 Horizontal Steps	6
Indoor Application.....	6
XDM 30°/2 Horizontal Steps	7
Outdoor Application	7
XDM 30°/2 Horizontal Steps	8
Indoor/Outdoor Application	8
XDM 30°/3 Horizontal Steps.....	9
Indoor Application.....	9
XDM 30°/3 Horizontal Steps.....	10
Outdoor Application	10
XDM 30°/3 Horizontal Steps.....	11
Indoor/Outdoor Application	11
XDM 35°/2 Horizontal Steps	12
Indoor Application.....	12
XDM 35°/3 Horizontal Steps	13
Outdoor Application	13
XDM 35°/2 Horizontal Steps	14
Indoor/Outdoor Application	14
XDT & XDTF 30° / Heavy Duty.....	15
XDT Outdoor Application.....	15
XDT & XDTF 30° / Heavy Duty.....	16
XDTF Outdoor Application	16
XDT & XDTF 30° / Heavy Duty.....	17
Outdoor Application	17
XDW 30° / Heavy Duty.....	18
Big R Ramp/ Outdoor Application.....	18
XDW 30° / Heavy Duty.....	19
Small R Ramp/ Outdoor Application.....	19
XDW 30° / Heavy Duty.....	20
Big/ Small R Ramp/ Outdoor Application	20

Arrangements

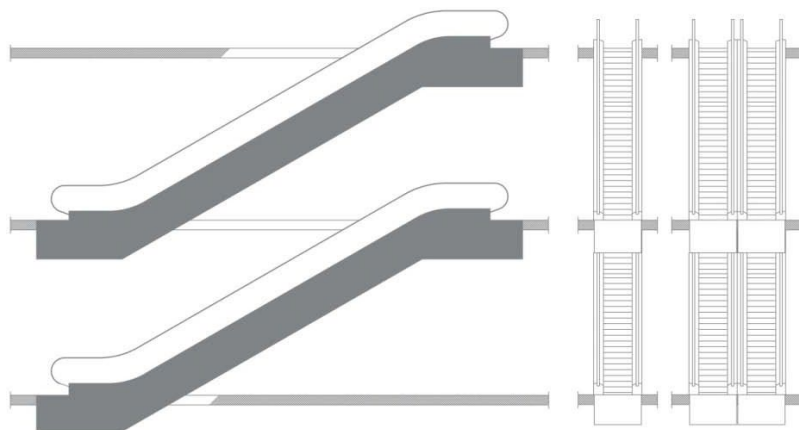
Single Unit

The single unit is used to link two levels. It is suitable for buildings with passenger traffic flowing mainly in one direction. Flexible adjustment to traffic flow is possible.



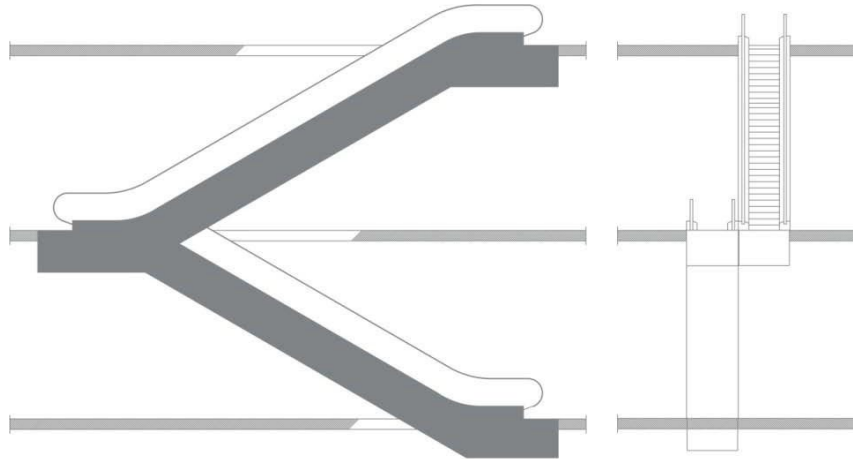
Interrupted & Parallel (one & two-way traffic)

The interrupted arrangement is somewhat inconvenient for users, but advantageous for department store owners. The parallel interrupted arrangement is used mainly in department stores and public transport buildings with a heavy traffic volume. When there are three or more escalators, it should be possible to reverse the traveling direction according to the traffic flow. This arrangement is economical, since no inner lateral claddings are required.



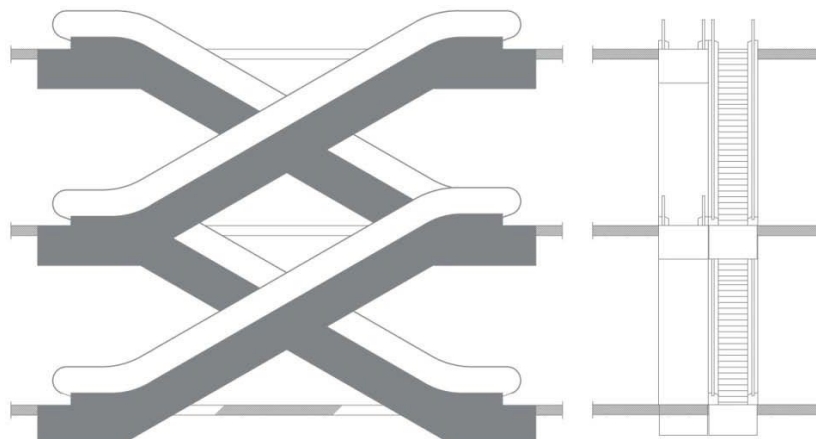
Continuous (one-way traffic)

The continuous arrangement is used mainly in smaller department stores to link three sales levels. It requires more space than the interrupted arrangement.







Crisscross, Continuous (two-way traffic)

The crisscross continuous arrangement is used mainly in major department stores, public buildings and public transport buildings where transport times between several levels should be kept to a minimum.



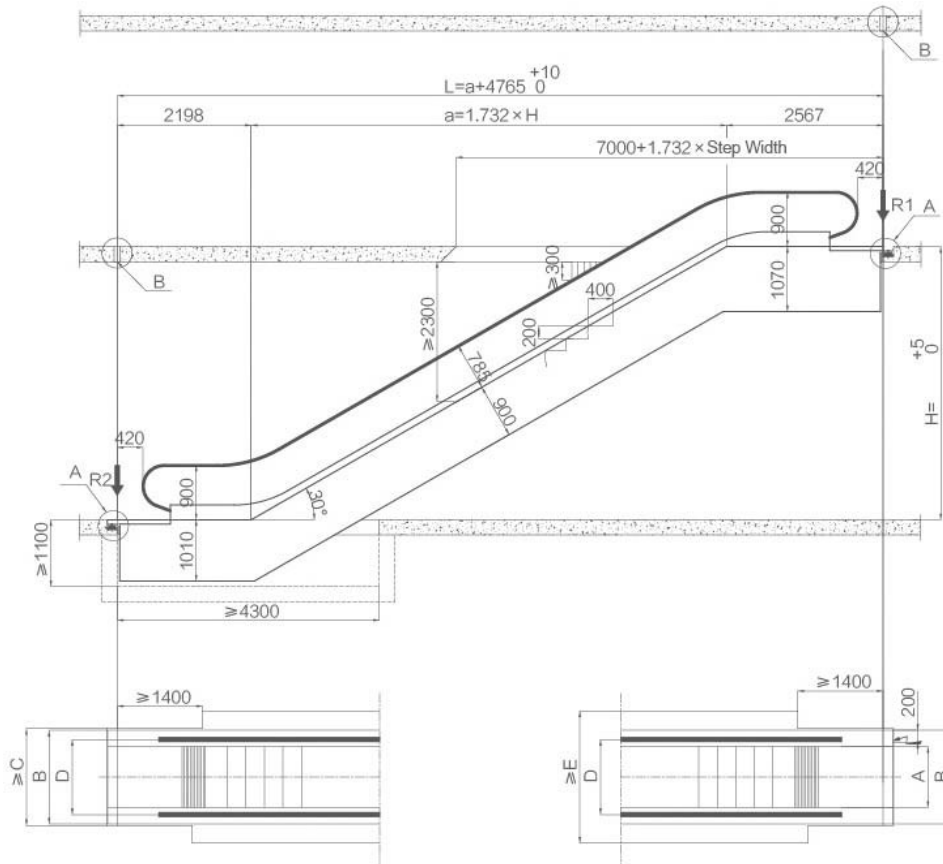
Solutions

<p>XFT Economical Type</p>	
<p>XCM Economical Type</p>	
<p>XDM Conventional Type</p>	
<p>XDF</p>	

Type	Rise Height (m)	Rated Speed (m/s)	Step Width (mm)
XFT (Indoor)	$H \leq 6$	0.5	600/800/1000
XCM (Indoor/Outdoor)	$H \leq 7$	0.5/0.65	
XDM (Indoor/Outdoor)	$H \leq 7$	0.5/0.65	
XDF (Indoor/Outdoor)	$H \leq 10$	0.5/0.65	

XDM 30°/2 Horizontal Steps

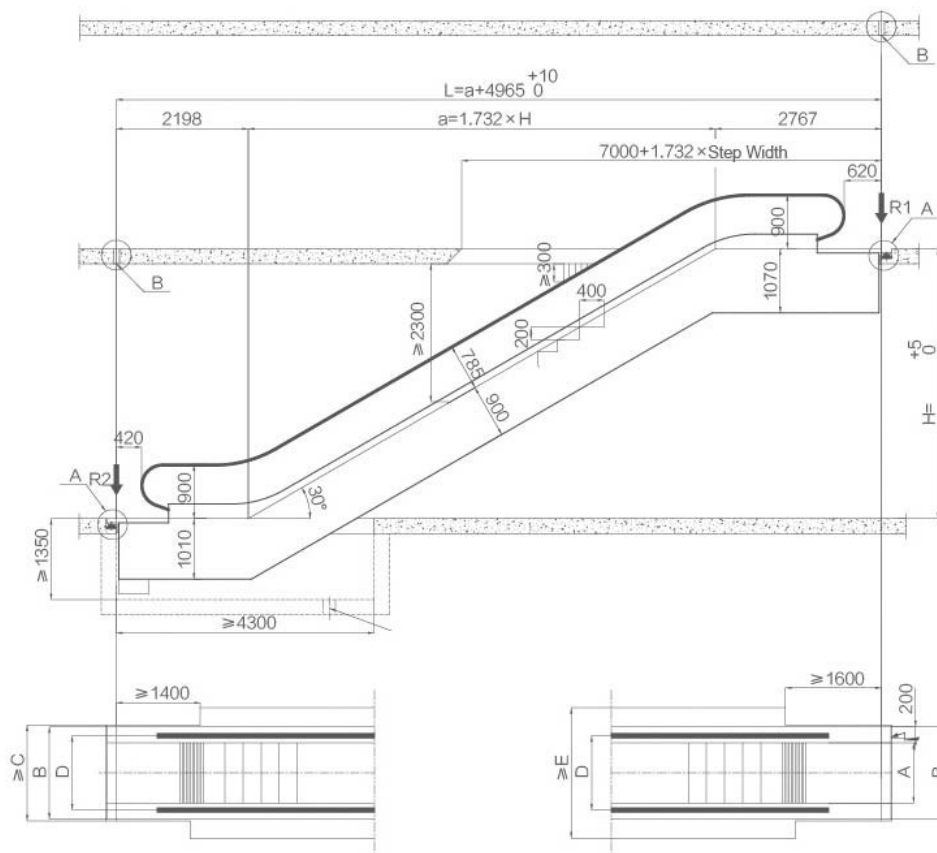
Indoor Application



	Rules of Extension Indoor Escalator's Upper Part				
	mm	<15KW	15KW	2X11KW	2X15KW
No Frequency	600	417	417		
	800	0	0	500	
	1000	0	0	500	800
Frequency	600	417	417		
	800	0	200	500	
	1000	0	0	500	800

XDM 30°/2 Horizontal Steps

Outdoor Application



	Rules of Extension Indoor Escalator's Upper Part				
	Mm	<15KW	15KW	2X11KW	2X15KW
No Frequency	600	217	217		
	800	0	0	300	
	1000	0	0	300	600
Frequency	600	217	217		
	800	0	0	300	
	1000	0	0	300	600

XDM 30°/2 Horizontal Steps

Indoor/Outdoor Application

Specifications		
Model	XDM/XCM/XFT30-600K	
	XDM/XCM/XFT30-800K	
	XDM/XCM/XFT30-1000K	
Speed	0.5m/s	
Rise	H<6000mm	
Incline	30°	
Supporting R1	KN	
Supporting R2	KN	
Weight	KN	
Power	Power Supply	Three-phase AC 380V 50HZ
	Lighting Supply	Single-phase AC power 220V 50HZ

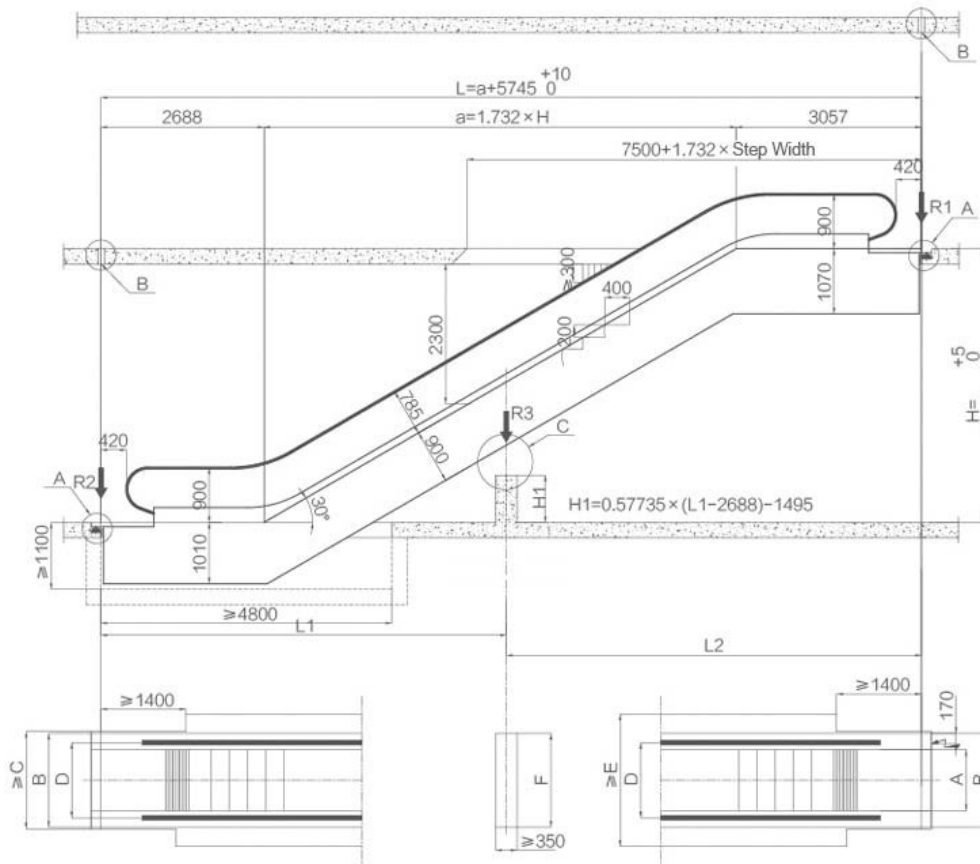
Standard Specifications & Dimensions				
Model		XDM-600K	XDM-800K	XDM-1000K
Step Width	A	600	800	1000
Decoration Width	B	1140	1340	1540
Opening Width	C	1200	1400	1600
Handrail Gap	D	838	1038	1238
Opening Width	E	1778	1978	2178

Power Meter (Step width 1000mm, speed 0.5m/s)		
5.5KW	8KW	11KW
1.5m≤H≤3.2m	3.2m≤H≤4.8m	4.8m≤H≤6.0m

Reacting Force				
Step Width	600	800	1000	Remark
R1 (KN)	3.5 x L + 15.5	4 x L + 17	4.5 x L + 18.5	L unit to m
R2 (KN)	3.5 x L + 10	4 x L + 11	4.5 x L + 11.5	

XDM 30°/3 Horizontal Steps

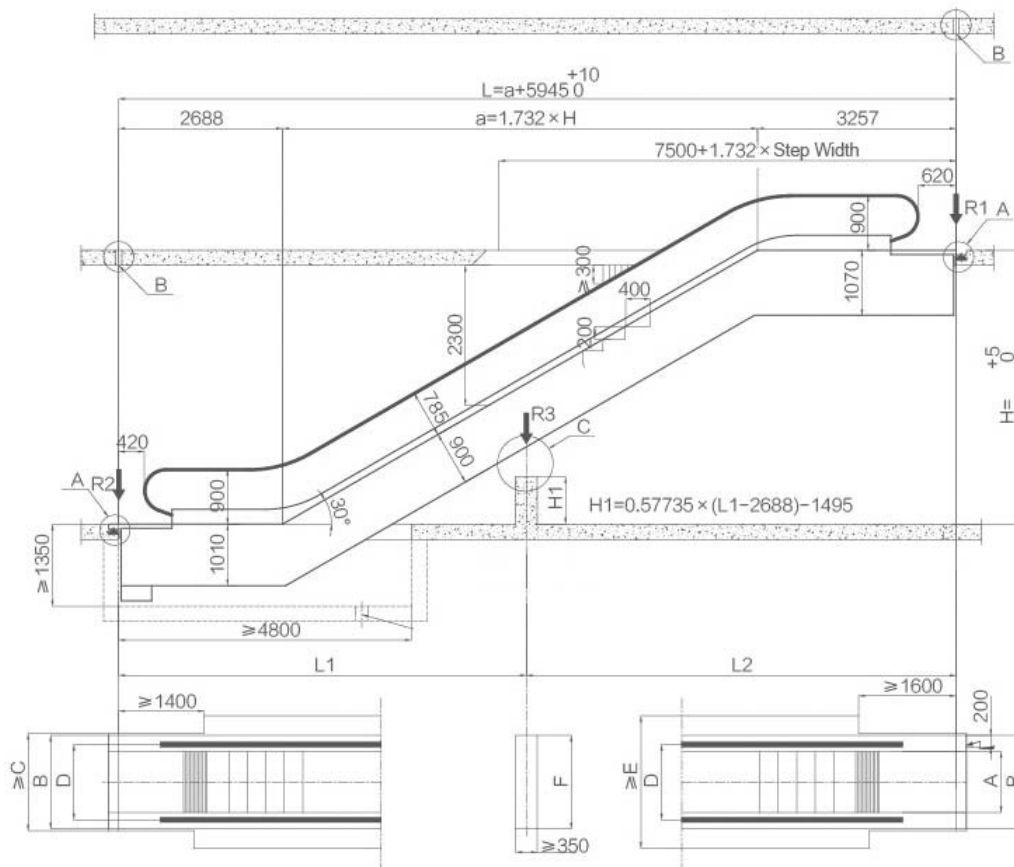
Indoor Application



	Rules of Extension Indoor Escalator's Upper Part				
	mm	<15KW	15KW	2X11KW	2X15KW
No Frequency	600	417	417		
	800	0	0	500	
	1000	0	0	500	800
Frequency	600	417	417		
	800	0	200	500	
	1000	0	0	500	800

XDM 30°/3 Horizontal Steps

Outdoor Application



	Rules of Extension Indoor Escalator's Upper Part				
	Mm	<15KW	15KW	2X11KW	2X15KW
No Frequency	600	217	217		
	800	0	0	300	
	1000	0	0	300	600
Frequency	600	217	217		
	800	0	0	300	
	1000	0	0	300	600

XDM 30°/3 Horizontal Steps

Indoor/Outdoor Application

Specifications		
Model		XDM/XCM/XFT30-600K
		XDM/XCM/XFT30-800K
		XDM/XCM/XFT30-1000K
Speed		0.5m/s
Rise		H<7000mm
Incline		30°
Supporting R1		KN
Supporting R2		KN
Weight		KN
Power	Power Supply	Three-phase AC 380V 50HZ
	Lighting Supply	Single-phase AC power 220V 50HZ

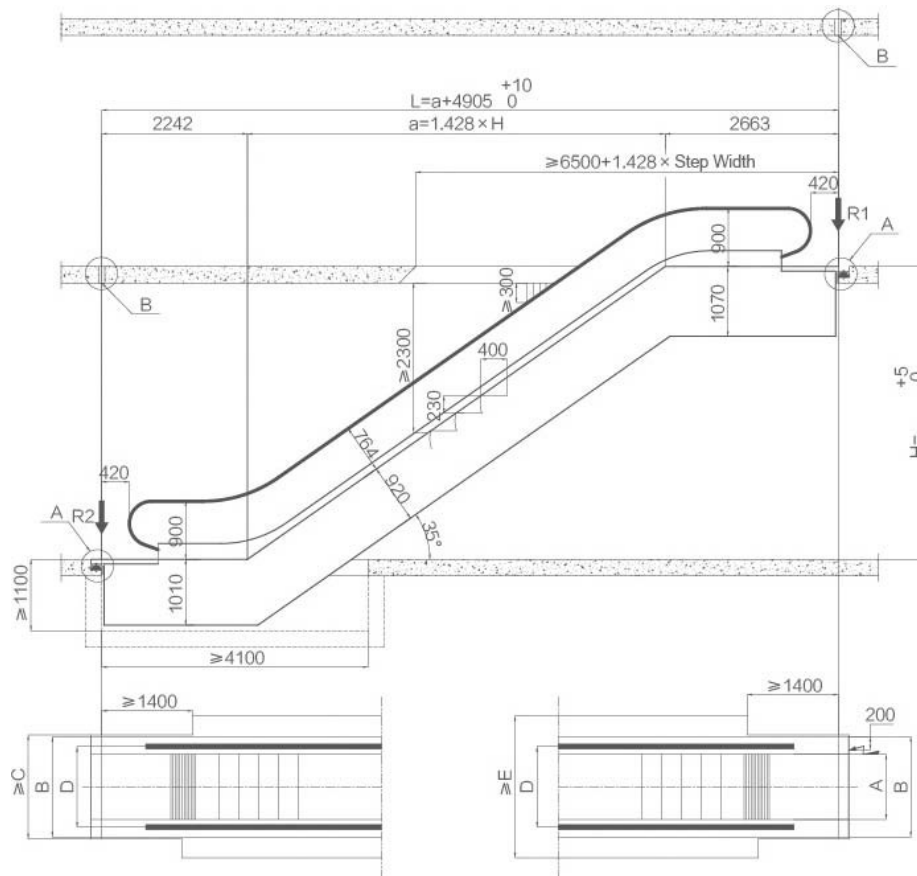
Standard Specifications & Dimensions				
Model		XDM-600K	XDM-800K	XDM-1000K
Step Width	A	600	800	1000
Decoration Width	B	1140	1340	1540
Opening Width	C	1200	1400	1600
Handrail Gap	D	838	1038	1238
Opening Width	E	1778	1978	2178
Length of the Support Base	F	1140	1340	1540

Power Meter (Step width 1000mm, speed 0.5m/s)			
5.5KW	8KW	11KW	15KW
1.5m≤H≤3.2m	3.2m≤H≤4.8m	4.8m≤H≤6.5m	6.5m≤H≤7m

Reacting Force			
Step Width	600	800	1000
R1 (KN)	4.1 x L2 + 15.5	4.5 x L2 + 16.1	5 x L2 + 17.5
R2 (KN)	4.1 x L1 + 7.8	4.5 x L1 + 7.8	5 x L1 + 8.5
R3 (KN)	4.25 x L1 + 9.5	4.5 x L + 10.5	5.2 x L + 11.5
Remark	L, L1, L2 in units of m, L1, L2 F exceeds 14.5m		

XDM 35°/2 Horizontal Steps

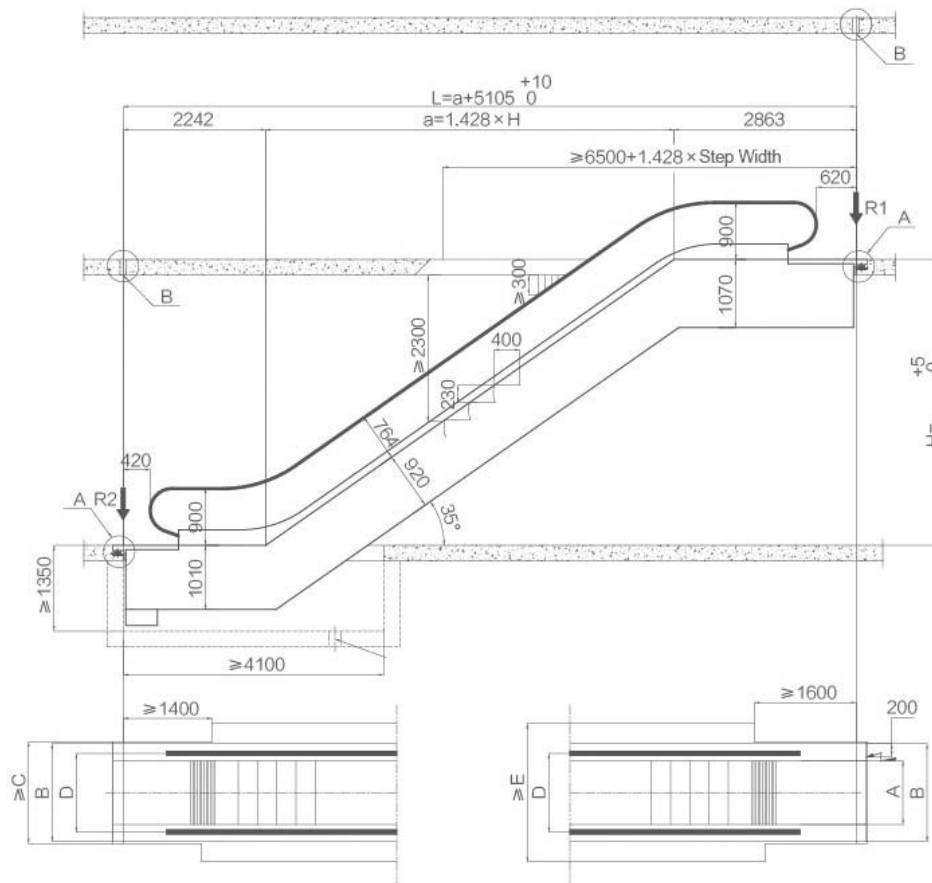
Indoor Application



	Rules of Extension Indoor Escalator's Upper Part				
	mm	<15KW	15KW	2X11KW	2X15KW
No Frequency	600	417	417		
	800	0	0	500	
	1000	0	0	500	800
Frequency	600	417	417		
	800	0	200	500	
	1000	0	0	500	800

XDM 35°/3 Horizontal Steps

Outdoor Application



	Rules of Extension Indoor Escalator's Upper Part				
	Mm	<15KW	15KW	2X11KW	2X15KW
No Frequency	600	217	217		
	800	0	0	300	
	1000	0	0	300	600
Frequency	600	217	217		
	800	0	0	300	
	1000	0	0	300	600

XDM 35°/2 Horizontal Steps

Indoor/Outdoor Application

Specifications		
Model		XDM/XCM/XFT35-600K
		XDM/XCM/XFT35-800K
		XDM/XCM/XFT35-1000K
Speed		0.5m/s
Rise		H<6000mm
Incline		35°
Supporting R1		KN
Supporting R2		KN
Weight		KN
Power	Power Supply	Three-phase AC 380V 50HZ
	Lighting Supply	Single-phase AC power 220V 50HZ

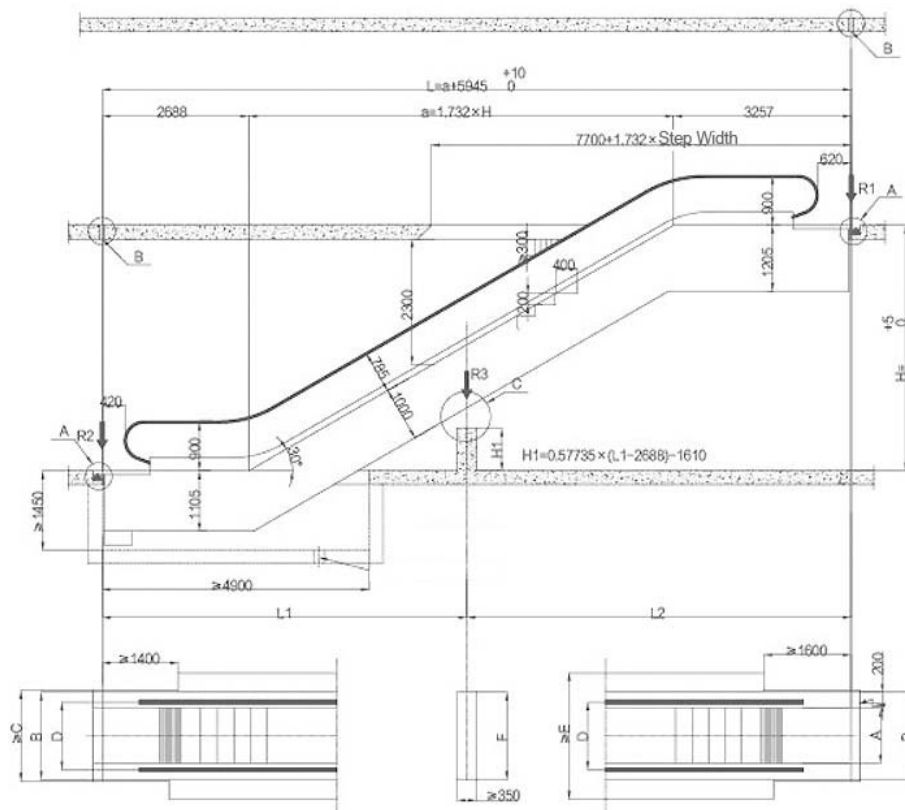
Standard Specifications & Dimensions				
Model		XDM-600K	XDM-800K	XDM-1000K
Step Width	A	600	800	1000
Decoration Width	B	1140	1340	1540
Opening Width	C	1200	1400	1600
Handrail Gap	D	838	1038	1238
Opening Width	E	1778	1978	2178

Power Meter (Step width 1000mm, speed 0.5m/s)		
5.5KW	8KW	11KW
1.5m≤H≤3.5m	3.5m≤H≤5.0m	5.0m≤H≤6.0m

Reacting Force				
Step Width	600	800	1000	Remark
R1 (KN)	3.5 x L + 15.5	4 x L + 17	4.5 x L + 18.5	L unit to m
R2 (KN)	3.5 x L + 10	4 x L + 11	4.5 x L + 11.5	

XDT & XDTF 30° / Heavy Duty

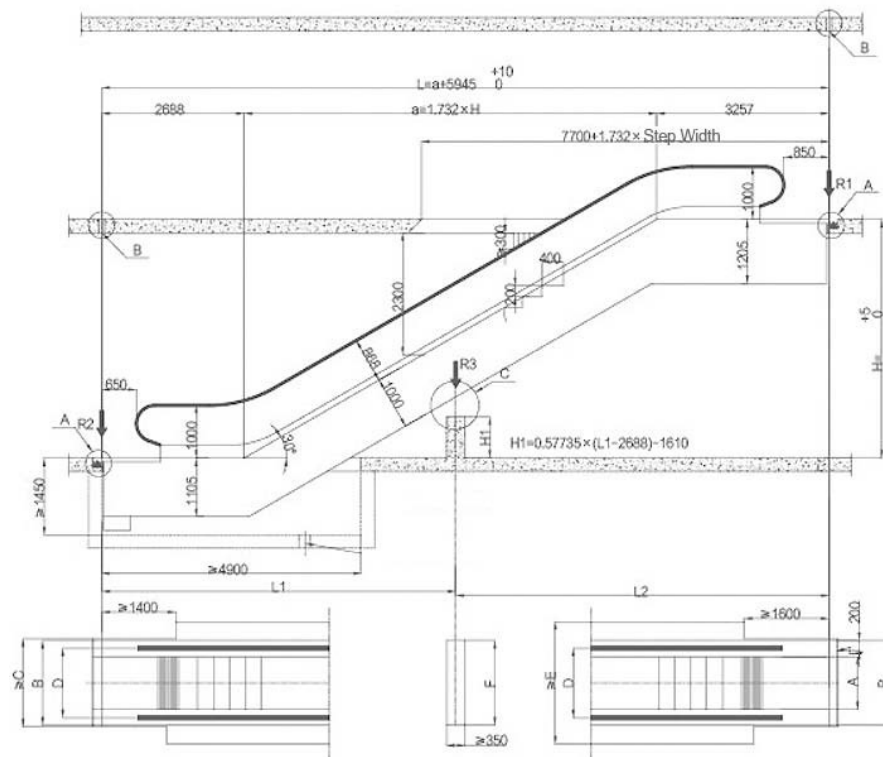
XDT Outdoor Application



Standard Specifications & Dimensions				
Model		XDM-600K	XDM-800K	XDM-1000K
Step Width	A	600	800	1000
Decoration Width	B	1200	1400	1600
Opening Width	C	1260	1460	1660
Handrail Gap	D	838	1038	1238
Opening Width	E	1910	2110	2310
Length of the Support Base	F	1200	1400	1600

XDT & XDTF 30° / Heavy Duty

XDTF Outdoor Application



Standard Specifications & Dimensions				
Model		XDM-600K	XDM-800K	XDM-1000K
Step Width	A	600	800	1000
Decoration Width	B	1200	1400	1600
Opening Width	C	1260	1460	1660
Handrail Gap	D	910	11108	1310
Opening Width	E	1910	2110	2310
Length of the Support Base	F	1200	1400	1600

XDT & XDTF 30° / Heavy Duty

Outdoor Application

Specifications		
Model	XDT30-600M/XDT30-800M/XDT30-1000M XDTF30-600M/XDTF30-800M/XDTF30-1000M	
Speed	0.5m/s	
Rise	XDT30:H _≤ 12000mm XDTF30:H _≤ 12000mm	
Incline	30°	
Supporting R1	KN	
Supporting R2	KN	
Supporting R3	KN	
Weight	KN	
Power	Power Supply	Three-phase AC 380V 50HZ
	Lighting Supply	Single-phase AC power 220V 50HZ

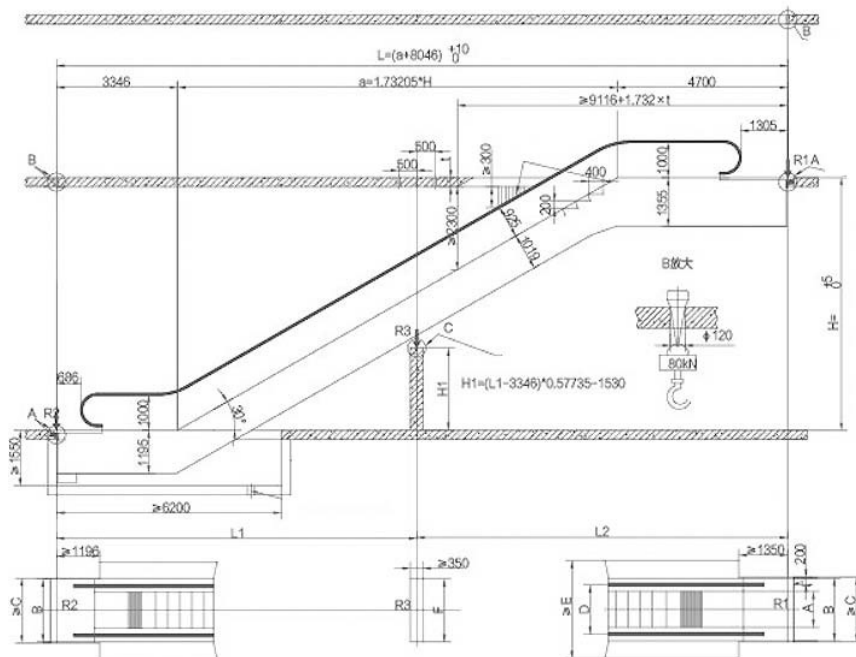
Power Meter (Step width 1000mm, speed 0.5m/s)				
8KW	11KW	15KW	2x11KW	2x15KW
1.5m<H _≤ 3.2m	3.2m<H _≤ 4.8m	4.8m<H _≤ 6.5m	6.5m<H _≤ 7m	11.5m<H _≤ 12m 11.5m<H _≤ 16m

Reacting Force			
Step Width	600	800	1000
R1 (KN)	4.1 x L2 + 15.5	4.5 x L2 + 16.1	5 x L2 + 17.5
R2 (KN)	4.1 x L1 + 7.8	4.5 x L1 + 7.8	5 x L1 + 8.5
R3 (KN)	4.25 x L + 9.5	4.5 x L + 10.5	5.2 x L + 11.5
Remark	L,L1,L2 in units of m, L1, L2 F exceeds 14.5m		

	Rules of Extension Indoor Escalator's Upper Part				
	Mm	<15KW	15KW	2X11KW	2X15KW
No Frequency	600	217	217		
	800	0	0	300	
	1000	0	0	300	600
Frequency	600	217	217		
	800	0	0	300	
	1000	0	0	300	600

XDW 30° / Heavy Duty

Big R Ramp/ Outdoor Application

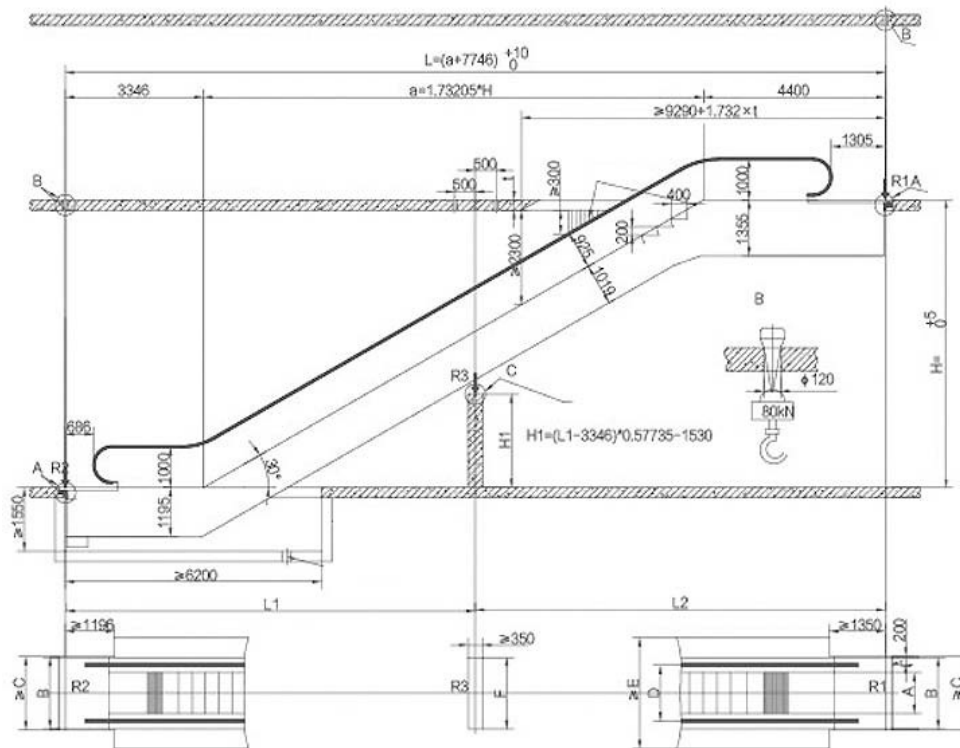


Power Meter XDW (Step width 1000mm, speed 0.5m/s)

8KW	11KW	15KW	18.5KW
$3.0 \leq H \leq 4.0\text{m}$	$4.0 \leq H \leq 5.2\text{m}$	$5.2 \leq H \leq 7.2\text{m}$	$7.2 \leq H \leq 9.0\text{m}$
2x11KW	2x15KW	2x18.5KW	2x22KW
$9.0 \leq H \leq 10.8\text{m}$	$10.8 \leq H \leq 14.5\text{m}$	$14.5 \leq H \leq 18.0\text{m}$	$18.0 \leq H \leq 22.0\text{m}$
2x30KW			
$22.0 \leq H \leq 30.0\text{m}$			

XDW 30° / Heavy Duty

Small R Ramp/ Outdoor Application



Power Meter XDW (Step width 1000mm, speed 0.5m/s)			
8KW	11KW	15KW	18.5KW
$3.0 \leq H \leq 4.0\text{m}$	$4.0 \leq H \leq 5.2\text{m}$	$5.2 \leq H \leq 7.2\text{m}$	$7.2 \leq H \leq 9.0\text{m}$
2x11KW	2x15KW		
$9.0 \leq H \leq 10.8\text{m}$	$10.8 \leq H \leq 12.0\text{m}$		

XDW 30° / Heavy Duty

Big/ Small R Ramp/ Outdoor Application

Specifications		
Model	XDW - 1000	
Speed	0.5m/s	
Rise	Big R Ramp :H≤ 30000mm	
	Small R Ramp :H≤ 12000mm	
Incline	30°	
Supporting R1	KN	
Supporting R2	KN	
Supporting R3	KN	
Weight	KN	
Power	Power Supply	Three-phase AC 380V 50HZ
	Lighting Supply	Single-phase AC power 220V 50HZ

Reacting Force			
Step Width	600	800	1000
R1 (KN)	4.1 x L2 + 38	4.5 x L2 + 40	5 x L2 + 42.5
R2 (KN)	4.1 x L1 + 26	4.5 x L1 + 27	5 x L1 + 28.5
R3 (KN)	4.25 x L + 37	4.5 x L + 39	5.2 x L + 41.5

Standard Specifications & Dimensions				
Model		XDM-600K	XDM-800K	XDM-1000K
Step Width	A	600	800	1000
Decoration Width	B	1340	1540	1740
Opening Width	C	1400	1600	1800
Handrail Gap	D	962	1162	1362
Opening Width	E	2312	2512	2712
Length of the Support Base	F	1340	1540	1740