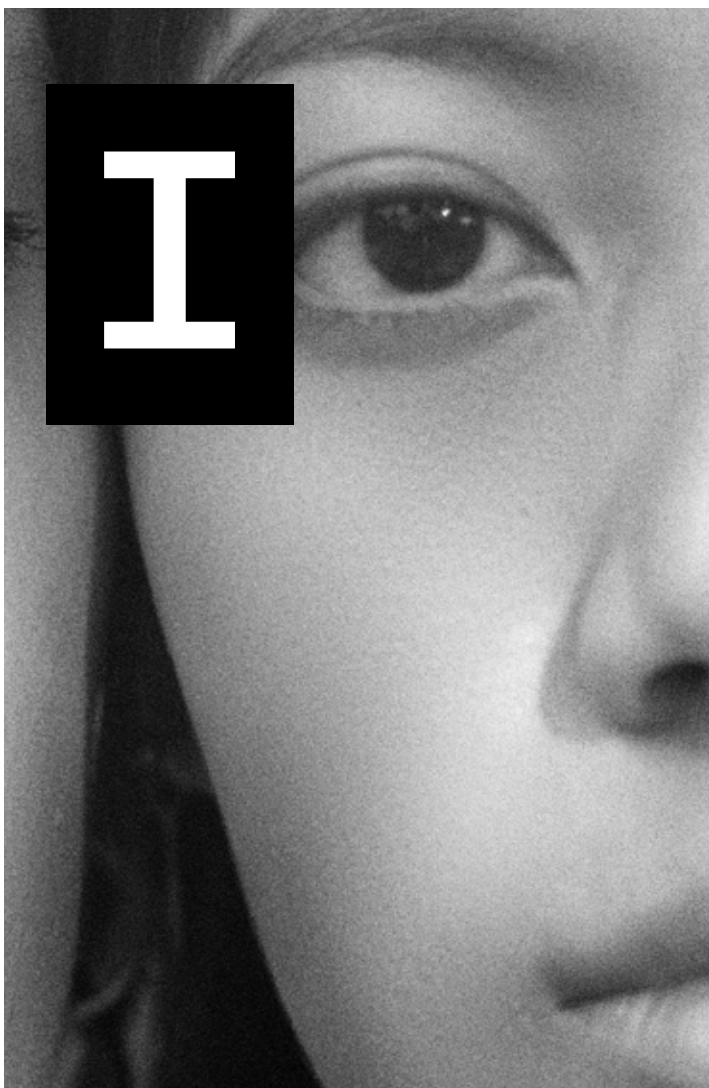


IKOS T/20

TRACTION  
HOME LIFT



Doppler  
Moving  
with options







IKOS T/20

TRACTION  
HOME LIFT



KINDLY MIND THAT ALL VISUAL RESULTS  
ARE SUBJECT TO CHANGE DEPENDING ON THE  
CONDITIONS OF THE END-ENVIRONMENT.



# INDEX

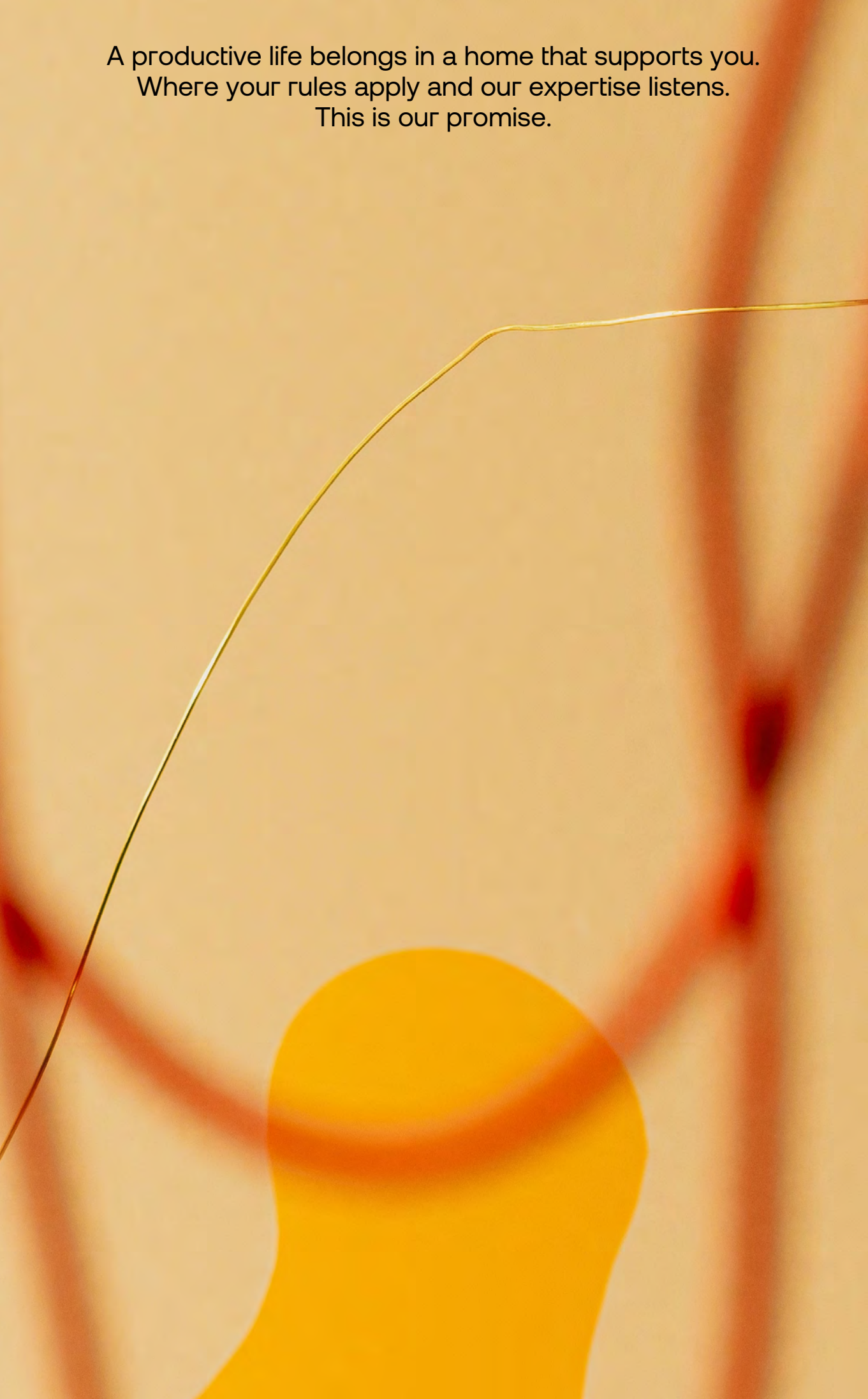
DOPPLER'S VISION	4-5
IKOS SERIES' MISSION	6-7
T/20'S SOLUTION	8-11
GALLERY	12-17
T/20 TRACTION HOME LIFT	18-21
SCHÉMA SHAFT	22-29
CABIN MODELS	30-47
ACCESSORIES	48-71
TECHNICAL CATALOGUE	72-83







A productive life belongs in a home that supports you.  
Where your rules apply and our expertise listens.  
This is our promise.









# IKOS SERIES

## HOME LIFT SOLUTIONS

Between point A and point B, lies our passion for enhancing the way you move around your personal space. When movement and comfort are taken care of, you are free to deliver your best self and connect with the things or people you love.



Home Lifts



Moving forward, home together



Committed to reinventing everyday life, from a global scale,  
to your very home. Responding effectively, through a sensory  
culture that can perceive your needs, looking upon them  
with a human eye.

Welcome home, with the IKOS Series.







## T/20'S SOLUTION

Stepping into your own home, should feel like it.  
This is where your needs are met. Because, there, the world is  
designed according to your preferences.

This is what drives us into long-lasting solutions that  
support freedom of movement and complement the whole  
family's daily experience through efficiency achieved silently,  
manifesting serenity at home.

Moving forward, and home together.





THE CABIN IS CHROMA CONTAINING A PANEL MIRROR, FURTHER COMPLIMENTING THE EXTERIOR SURROUNDINGS. THE CEILING WAS CHOSEN AS TO MATCH THE CONTEMPORARY AESTHETICS OF THE LIVING ROOM, AS WERE THE COP AND LOP.









THE CABIN IS CHROMA WITH A SOFT TOUCH TEXTURE, COMPOSING A VISUAL RESULT INCORPORATED EVER SO NATURALLY INTO THE LIVING ROOM'S ENVIRONMENT, WITH A CEILING CHOICE THAT STANDS OUT AND AND A HIGHLY DISCREET LOP.





THE INDOOR PANORAMIC ELEVATOR WITH A STAINLESS STEEL SHAFT, RENDERING A REFINED MINIMALISTIC DESIGN STATEMENT, FUNCTIONING AS A SIGNIFICANT, ADDITIONAL COMPONENT TO THE AESTHETIC RESULT.



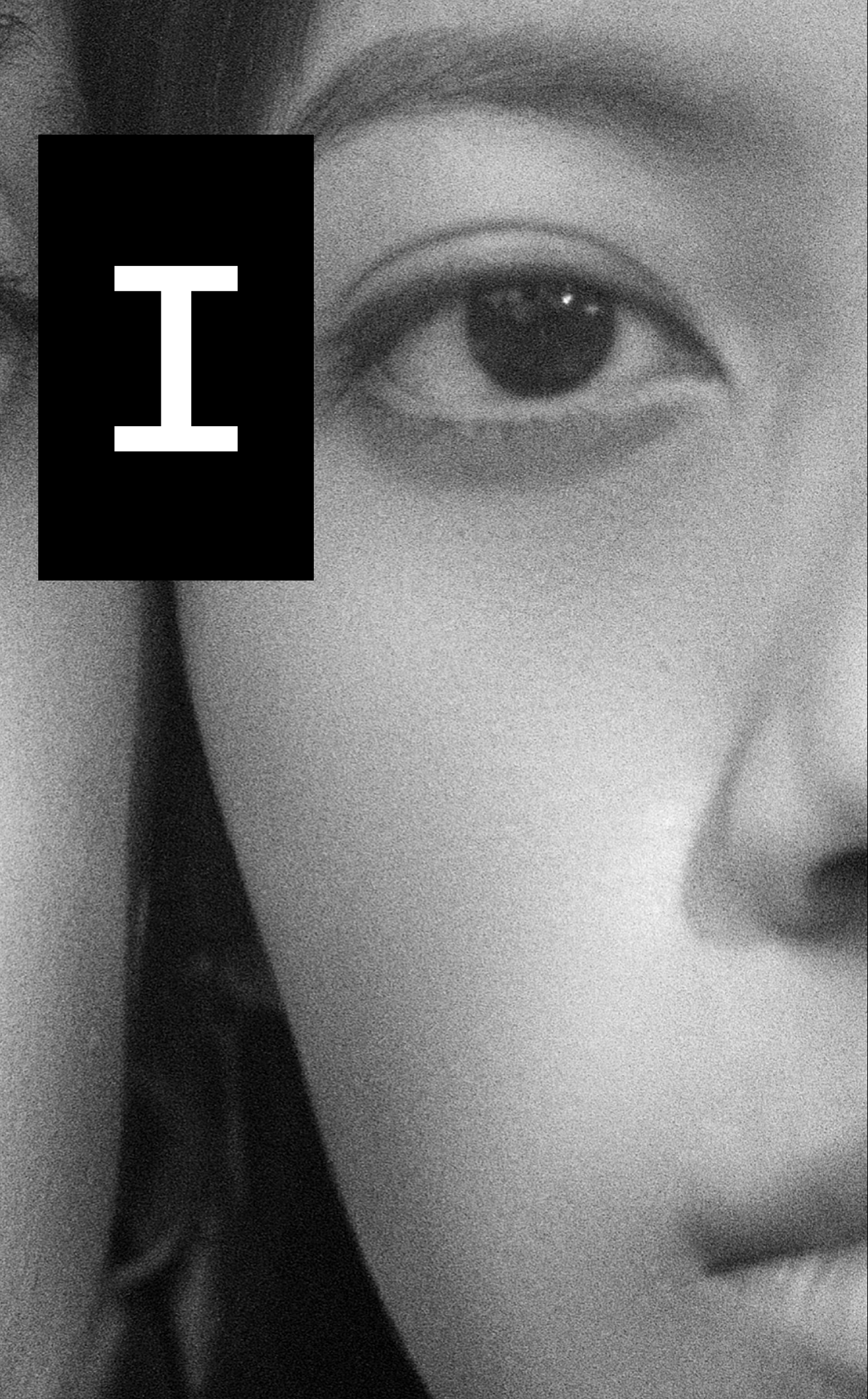


THE PANORAMIC CABIN, MANIFESTING A PERFECT VISUAL MATCH TO THE EXTERIOR ARCHITECTURE OF THE BUILDING. THE SHAFT IS METAL, MIMICKING THE BUILDING'S OVERALL AESTHETICS.









I



T/20

TRACTION  
HOME LIFT







IKOS T/20

TRACTION  
HOME LIFT

IKOS T/20

●	MIN. RATED LOAD	250kg
●	MAX. PERMISSIBLE LOAD	500kg
●	MAX. SPEED	0.15m/s, 0.3-0.4m/s (NON EU COUNTRIES)
●	MAX. LOADING AREA	2m²
●	MIN PIT	190mm (STANDARD PLASTIC FLOOR)
●	TRACTION DRIVEN	
●	PERFECTLY MATCHED WITH SCHÉMA STEEL	
●	FOLLOWING 2006/42/EC AND COMPLIANT WITH EN81-41	
●	AUTOMATIC OR SWING LANDING DOOR	
●	SILENT FUNCTION	
●	AUTOMATIC RESCUE OPERATION IN CASE OF POWER FAILURE	
●	MINIMUM ENERGY CONSUMPTION	291KWh
●	EASILY ACCESSIBLE FOR CLEANING	
●	SAFE USE FOR THE WHOLE FAMILY	
●	ENVIROMMENTALLY FRIENDLY	





Moving forward, home together



# SCHÉMA SHAFT

A CULTURE OF SOLUTIONS THAT LAST AND A DRIVE FOR EXQUISITE DESIGN FIND THEIR OPTIMAL RESULT IN THE SCHÉMA STEEL SHAFT. CONTENTMENT, SAFETY AND EASE FOR ALL.

ALL RAL SHADES  
AVAILABLE ONLINE

IKOS T/20





FRAMED SAFETY GLASS ACCORDING TO  
EN 14449:2005  
THICKNESS DIFFERS ACCORDING TO  
PROJECT SPECS

INFO





SAFETY GLASS PINNED OR  
WITH SPIDER FITTINGS

INFO





Moving forward, home together



# SCHÉMA SHAFT

SCH50

	RATED LOAD	500kg
	MAX TRAVEL	18m
	IN COMPLIANCE WITH	EN 1090
	GLASS / FRAMED / PINNED OR WITH SPIDER FITTINGS	
	STEEL / CHROMA / LIQUID PAINTED PANELS	
	STAINLESS STEEL CLADDINGS	
	INDOOR / OUTDOOR	
	STATIC CALCULATIONS AVAILABLE ACCORDING TO EUROCODE 8	

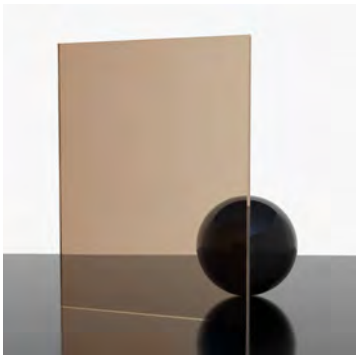




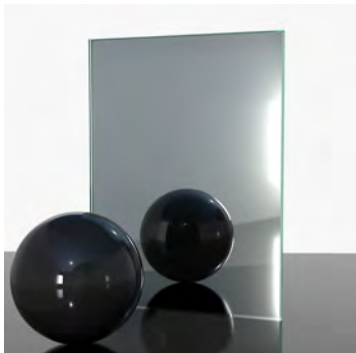
W3.10  
01 CLEAR



W3.12  
03 GREY TINTED



W3.13  
04 BRONZE TINTED



W3.19  
10 MIRASTAR



W3.20  
11 BLACK FUME



W3.22  
13 FLUTED SATIN CLEAR

Stainless Steel Panels



W4.1  
SATIN/HL/SB/N4



W4.2  
SUPER MIRROR N8



W4.36  
BLACK SATIN/HL/SB/N4



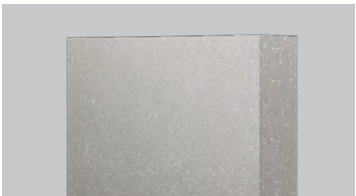
W4.37  
BLACK SUPER MIRROR N8



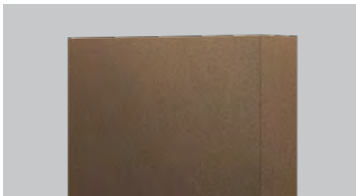
Powder Coating Steel Panels



W5.1  
501 BLACK

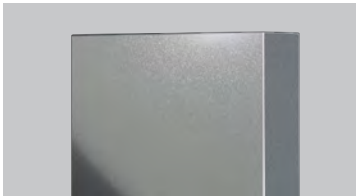


W5.2  
501 SILVER

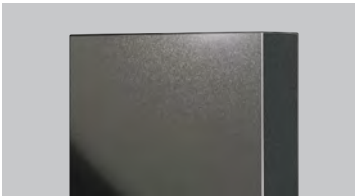


W5.4  
501 BRONZE

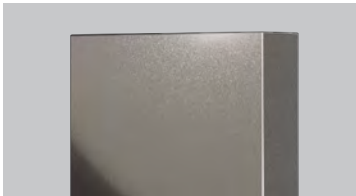
Liquid Paint Steel Panels



W6.4  
810-M GRIGIO



W6.5  
790-GRAFITE



W6.6  
840-M ASH GREY





Moving forward, home together



# CABIN MODELS

MAKING YOUR HOME-LIFT AN EXTENSION OF YOUR PERSONAL TASTE.  
COMMITTED TO ADDING CONTENTMENT INTO EVERY INTERACTION AND ELEVATING YOUR HOME'S VALUE.





POWDER COATED OR LIQUID PAINTED STEEL FOR SIDE WALLS AND PERIPHERALS  
RAL 1013

CHROMA

Moving forward, home together





STAINLESS STEEL FOR SIDE WALLS AND PERIPHERALS

INOX

IKOS T/20





PERIPHERAL GLASS TRANSPARENCY  
ONE OR TWO PANORAMIC SIDES APPLICABLE

PANORAMIC

Moving forward, home together









RAL 7033

Moving forward, home together



# CHROMA

HIGH QUALITY, SIMPLICITY AND FUNCTIONALITY  
CREATED IN ONE, FOR ALL.

CHROMA CABIN MODEL

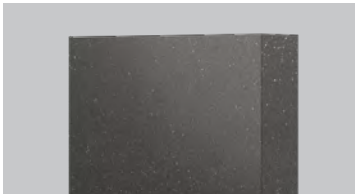
- FOUNDATIONAL LINE
- POWDER COATED OR LIQUID PAINTED STEEL FOR SIDE WALLS AND PERIPHERALS
- BESPOKE PRINTING ON SIDES AND FLOOR
- ENTIRETY OF RAL COLOR SYSTEM
- STEEL / CORNERS / SKIRTING PERIPHERALS



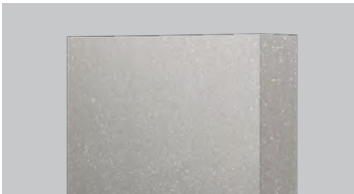




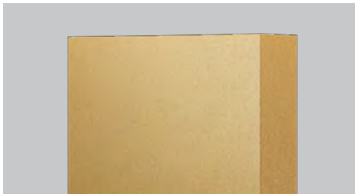
SIDE WALLS



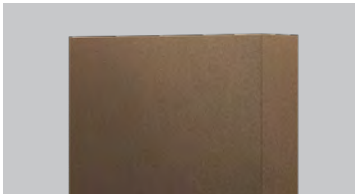
W5.1  
501 BLACK



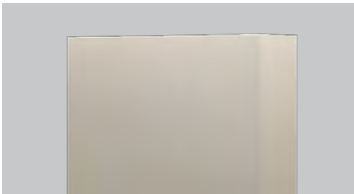
W5.2  
501 SILVER



W5.3  
501 GOLD



W5.4  
501 BRONZE



W5.5  
7032 PEBBLE GREY



W5.6  
7035 LIGHT GREY

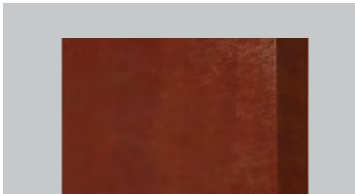


W5.7  
7042 TRAFFIC GREY



W5.8  
9016 TRAFFIC WHITE

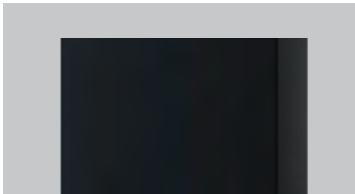
Liquid Paint Texture Options



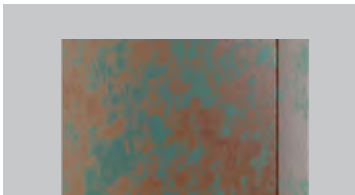
W6.10  
CORTEN



W6.12  
LEATHER



W6.14  
SOFT TOUCH



W6.14  
VINTAGE







# INOX

MINDFULLY DESIGNED FOR A CONTEMPORARY STYLE  
THAT STANDS THE TEST OF TIME.

INOX CABIN MODEL

- FOUNDATIONAL LINE
- BRUSHED STAINLESS STEEL OR MIRROR
- MULTI-COLOR STAINLESS STEEL FINISHES
- SPECIAL OR PATTERNED STAINLESS STEEL FINISHES
- STAINLESS STEEL / CORNERS STRAIGHT OR CURVED / SKIRTING PERIPHERALS







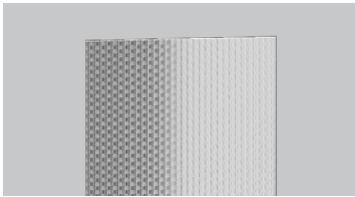
SIDE WALLS



W4.1  
SATIN/HL/SB/N4



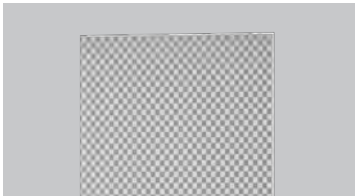
W4.2  
SUPER MIRROR N8



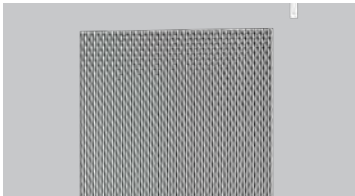
W4.6  
LINEN



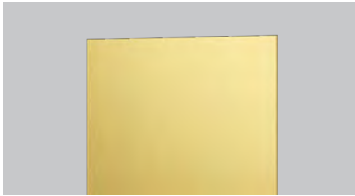
W4.7  
LEATHER



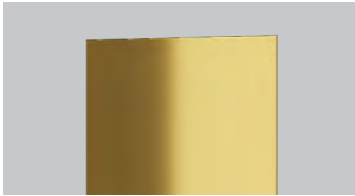
W4.8  
DAMA



W4.11  
5WL



W4.12  
GOLD SATIN/HL/SB/N4



W4.13  
GOLD SUPER MIRROR N8







# PANORAMIC

INCORPORATING EXPERIENTIAL DESIGN  
INTO YOUR VERY HOME.

PANORAMIC CABIN MODEL

- FOUNDATIONAL LINE
- SECURIT GLASS
- SCRATCH AND SHOCK RESISTANT
- ONE OR TWO PANORAMIC SIDES
- FRAMED OR FRAMELESS
- STAINLESS STEEL / CORNERS / SKIRTING PERIPHERALS
- ENTIRETY OF RAL COLOR SYSTEM FOR SIDES / CORNERS / SKIRTING PERIPHERALS







SIDE WALLS



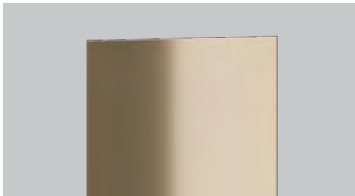
W4.1  
SATIN/HL/SB/N4



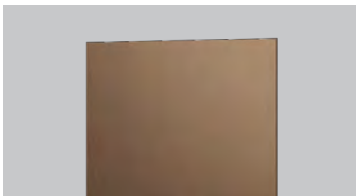
W4.21  
GOLD 4N AFP



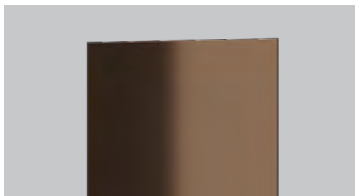
W4.22  
CHAMPAGNE SATIN/HL/SB/N4



W4.23  
CHAMPAGNE SUPER MIRROR N8



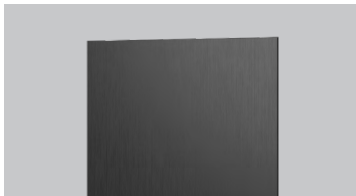
W4.26  
BRONZE SATIN/HL/SB/N4



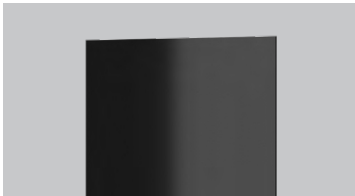
W4.27  
BRONZE SUPER MIRROR N8



W4.29  
DARK BRONZE AFP

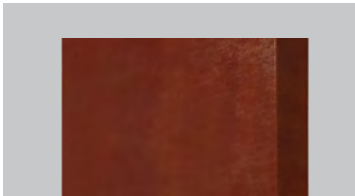


W4.38  
DARK BLACK SATIN/HL/SB/N4

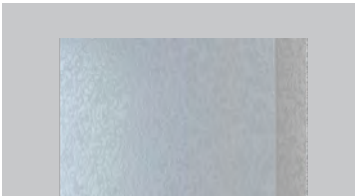


W4.39  
DARK BLACK SUPER  
MIRROR N8

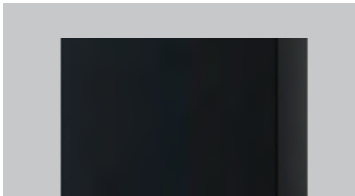
Liquid Paint Texture Options



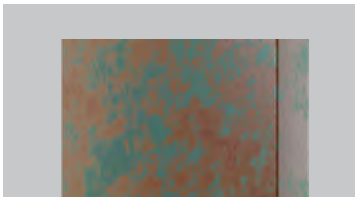
W6.7  
CORTEN



W6.8  
LEATHER



W6.9  
SOFT TOUCH



W6.10  
VINTAGE







# ACCESSORIES

TAKING CUSTOMIZATION TO A DEEPER LEVEL THROUGH ACCESS INTO EVERY OPTION.

AS YOU PRESS THE LOP BUTTON, YOU'RE INVITED TO APPRECIATE ITS ENJOYABLE TOUCH AND THE LCD, BLACK TRICOLOR SCREEN AS YOUR LIFT ARRIVES. ELEGANCE, EVIDENT THROUGH THE COMPONENTS, CAREFULLY CURATED IN A UNIFIED PANEL. AS THE DOORS OPEN, YOU ARE LET INTO THE QUALITY OF THE IKOS HOME LIFT.

HOME, AS YOU HAVE  
ENVISIONED IT.

CONTACT  
MARKETING@DOPPLER.GR  
FOR YOUR BESPOKE  
MATERIAL REQUESTS.





AVAILABLE IN STAINLESS STEEL SATIN / MIRROR / GOLD MIRROR  
DOWN FULL COLLECTIVE EN 81-70

A2.1.1 LS





AVAILABLE IN A VARIETY OF FINISHES  
LCD

A2.2.1 LF





BUTTON(S) IN DOOR FRAME  
FLUSH MOUNTED

A2.2.5 LFNP







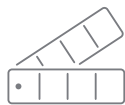
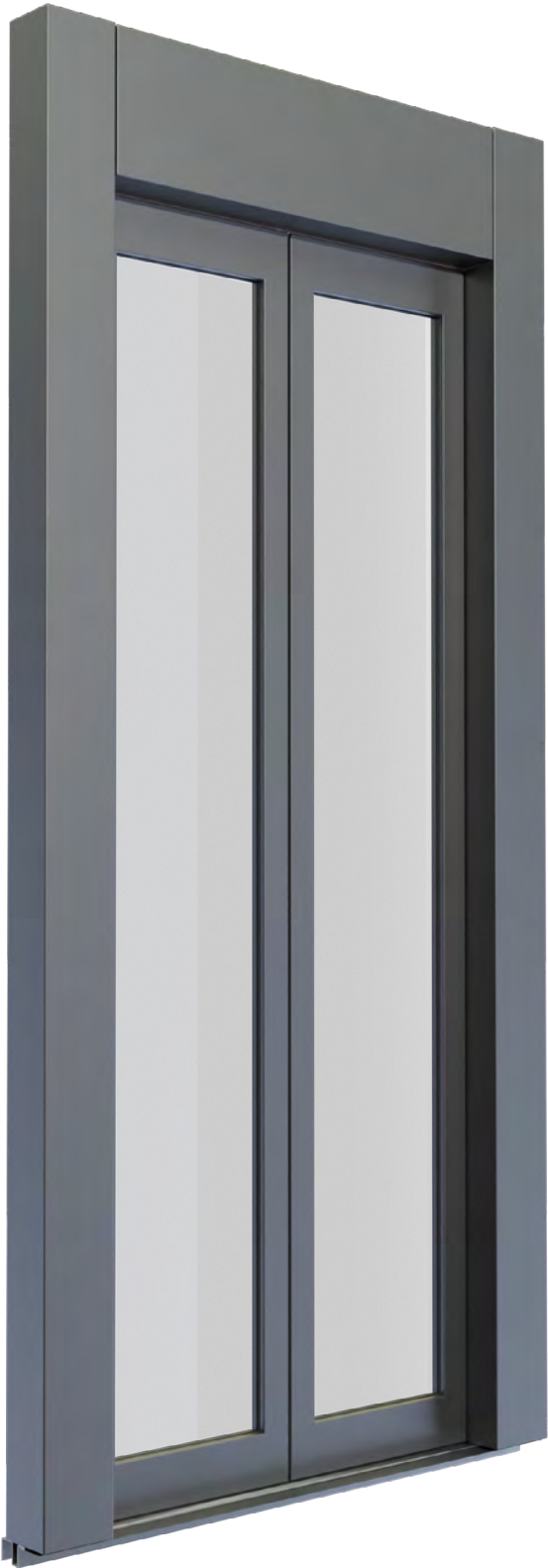


ALL RAL COLOURS  
AVAILABLE

SOL SOLID PANELS  
SIDE OPENING (L/R)  
CENTRAL OPENING ID PANELS

D1.1.1



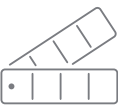


ALL RAL COLOURS  
AVAILABLE

FRAMED GLASS PANELS  
SIDE OPENING (L/R)  
CENTRAL OPENING

D1.1.2





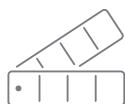
ALL RAL COLOURS  
AVAILABLE

K11  
SINGLE PANEL  
(1P) L/R



D1.2.1





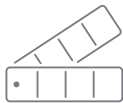
ALL RAL COLOURS  
AVAILABLE

K12  
SINGLE PANEL  
(1P) L/R

D1.2.2

IKOS T/20



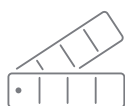


ALL RAL COLOURS  
AVAILABLE

K15  
SINGLE PANEL  
(1P) L/R

D1.2.3





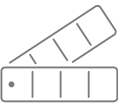
ALL RAL COLOURS  
AVAILABLE

K16  
SINGLE PANEL  
(1P) L/R

D1.2.4

IKOS T/20



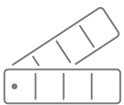


ALL RAL COLOURS  
AVAILABLE

MARYTH  
SINGLE PANEL  
(1P) L/R  
THERMALLY INSULATED DOOR

D1.2.12





ALL RAL COLOURS  
AVAILABLE

SOPHIA  
SINGLE PANEL  
(1P) L/R  
FIRE RATED DOOR  
EI 120 EW 60 CLASS EN 81.58

D1.2.13

(APPLICABLE EUROPEAN REGULATIONS)

IKOS T/20





KNOB

A5.4



129SP

A5.5









FC11

A8.11



FC31

A8.28









FULL HEIGHT COLUMN  
PICTOGRAMS AS PER EN 81-28  
AVAILABLE IN A VARIETY OF FINISHES  
BUTTONS AS PER EN 81-70  
TFT OR IPL (DDA)

A1.1.1





AVAILABLE IN A VARIETY OF FINISHES  
BUTTONS ILLUMINATION COLOR RED, BLUE, WHITE  
PICTOGRAMS AS PER EN 81-28  
TFT OR IPL

A1.2.1





HR2

A5.1



HR3

A5.2

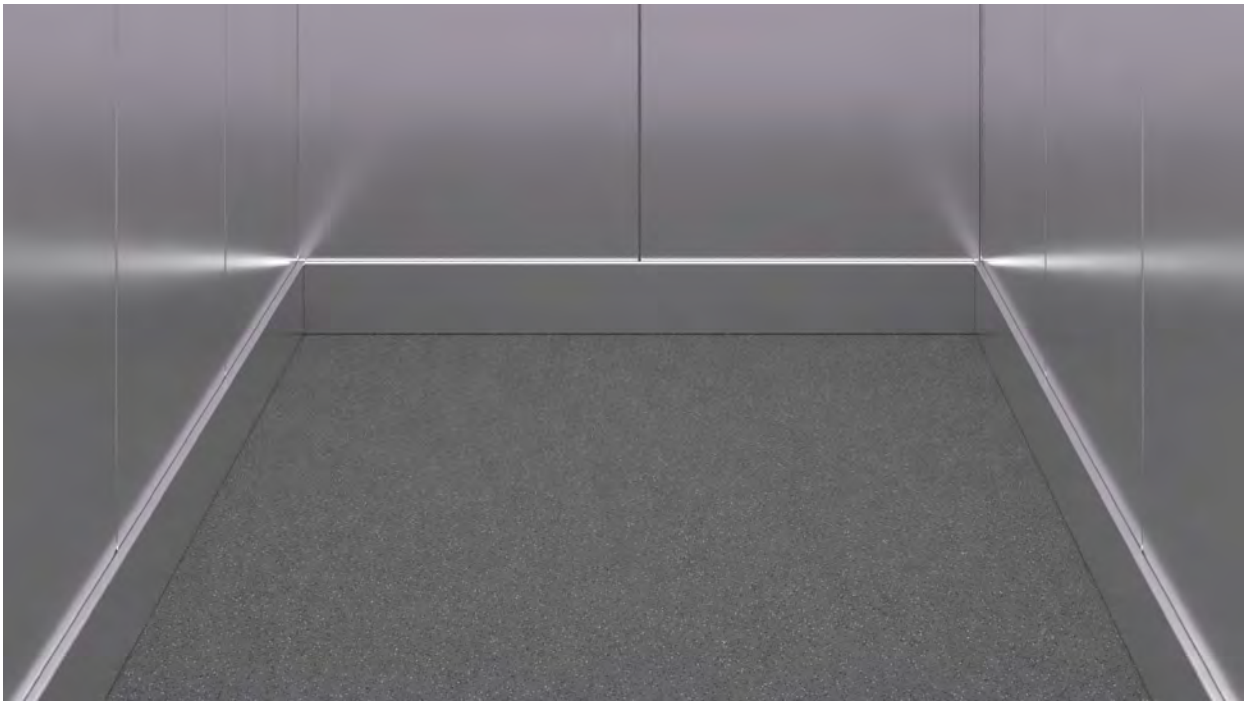




HR4

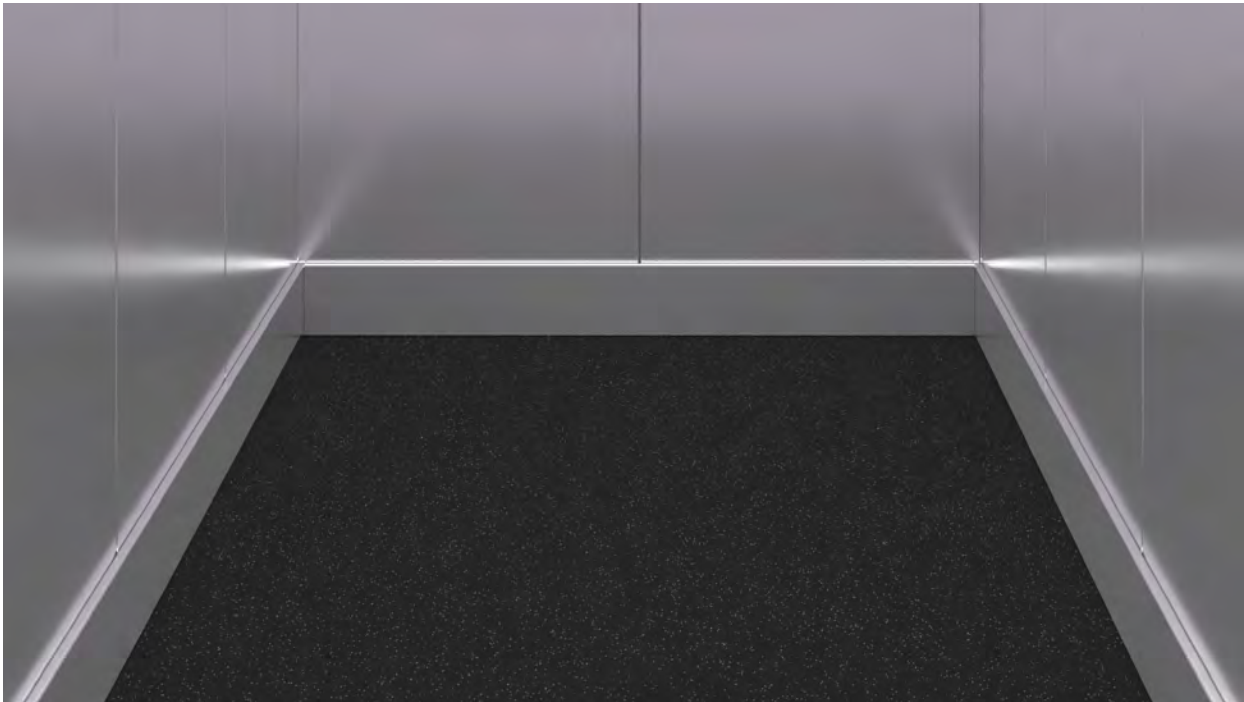
A5.3





G424 MERCURY

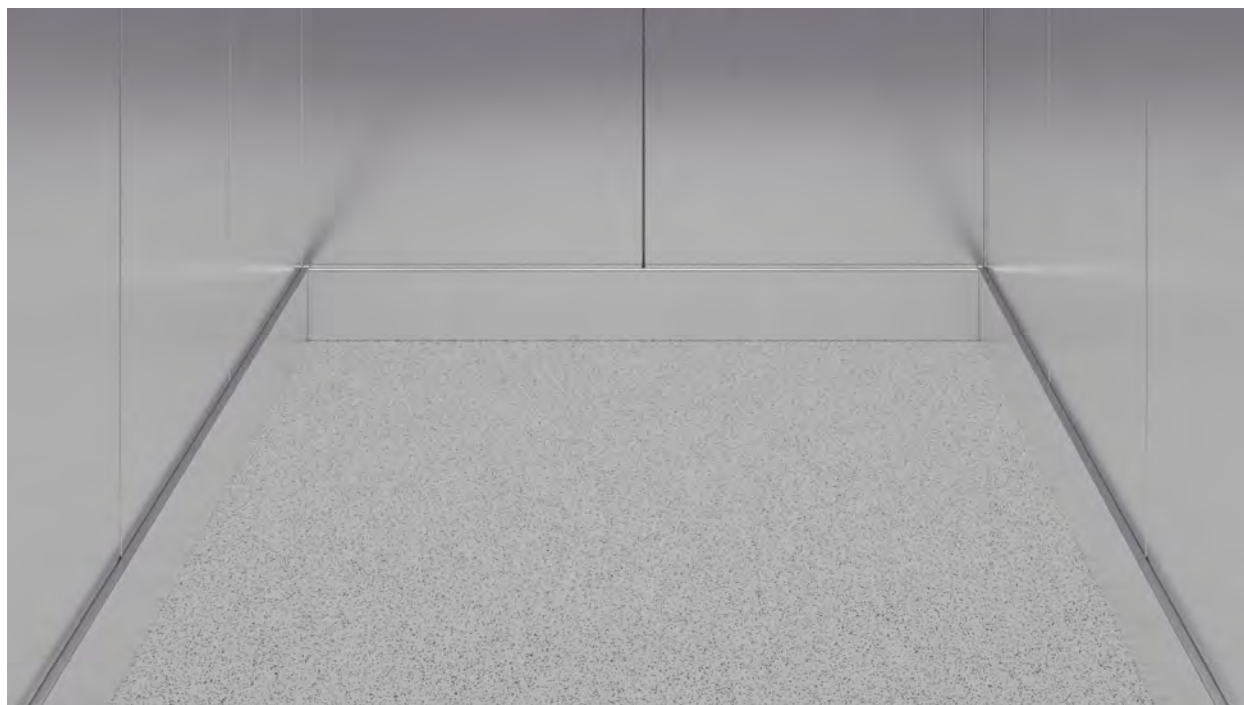
F2.1



PF5 QUASAR

F2.4

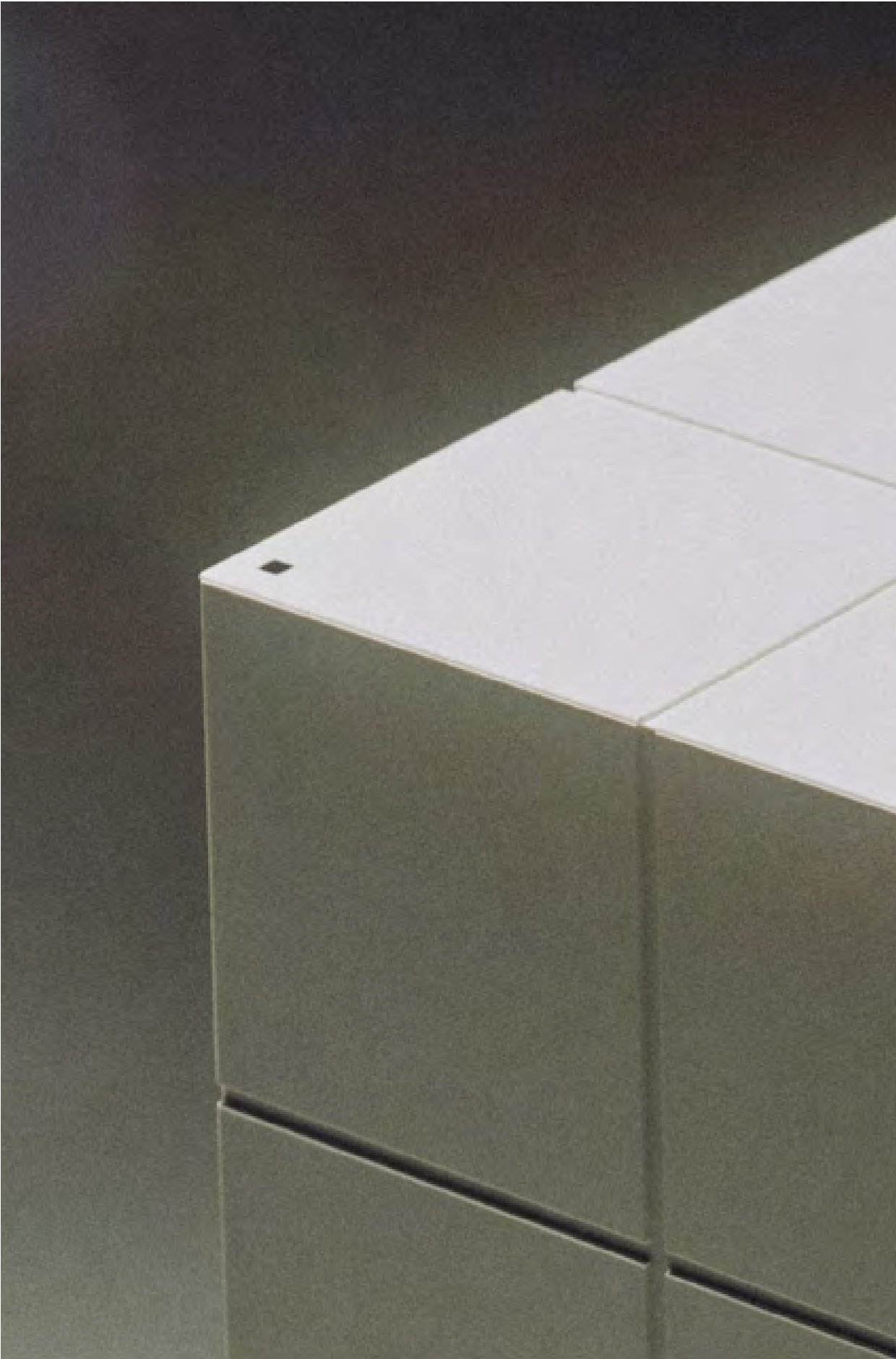




PF3 VENUS

F2.3





Moving forward, home together



# RANGE OF APPLICATION

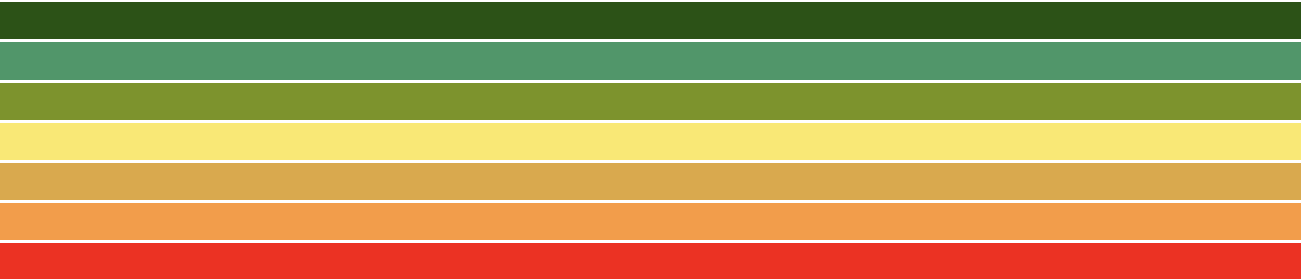
MINDFULLY DELIVERING OPTIONS THAT SERVE FUNCTIONALITY AND  
BESPOKE REQUESTS FOR LONG-LASTING SOLUTIONS.

●	MAX SPEED	0.15m/s   0.3-0.4m/s (NON EU COUNTRIES)
●	MIN PIT	190mm (STANDARD PLASTIC FLOOR)
●	MIN HEADROOM-SWING DOOR	2400mm
●	MIN HEADROOM-AUTOMATIC DOOR	2550mm (UNDER CONDITIONS 2400mm)
●	CONTROLLER CABINET'S DIMENSIONS	400×250×2230mm
●	CANTILEVERED CAR SLING	



NOMINAL DEMAND PER  
YEAR FOR NOMINAL  
VALUES AS SHOWN:  
291 KWH

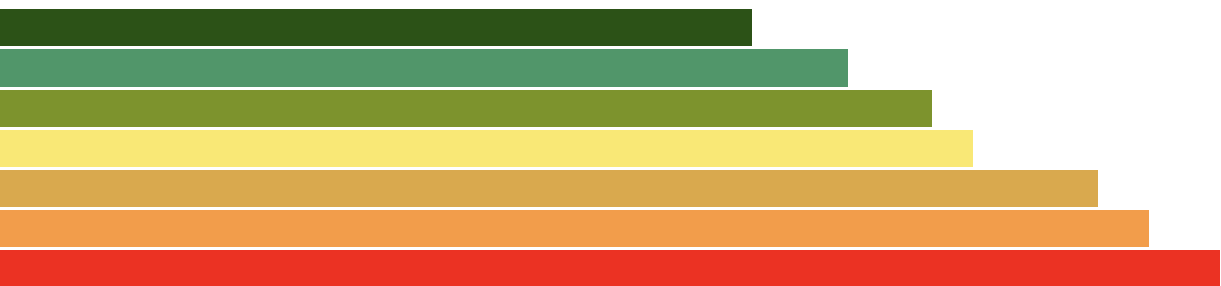
A : 291





ENERGY EFFICIENT  
CLASS

kWh



B  
C  
D  
E  
F  
G



Masonry-Swing Doors

SINGLE DOOR

Rated Load	Q	250	320	320	400	450	500(max)	(kg)
Cabin Width	CW	600	800	900	1100	1200	1200	(mm)
Cabin Depth	CD	1120	1200	1400	1400	1500	1650	(mm)
Shaft Width	SW	1120	1270	1370	1570	1670	1670	(mm)
Shaft Depth	SD	1220	1355	1555	1555	1655	1805	(mm)
Door Opening	DO	600	700	800	900	900	900	(mm)

SINGLE DOOR

Rated Load	Q	250	320	400	400	450	500(max)	(kg)
Cabin Width	CW	950	950	1300	1400	1500	1650	(mm)
Cabin Depth	CD	600	900	1000	1000	1200	1200	(mm)
Shaft Width	SW	1130	1130	1435	1535	1635	1785	(mm)
Shaft Depth	SD	1090	1390	1490	1490	1690	1690	(mm)
Door Opening	DO	800	800	900	900	900	1000	(mm)

ADJACENT DOORS

Rated Load	Q	250	320	400	400	450	500(max)	(kg)
Cabin Width	CW	600	800	1000	1200	1200	1200	(mm)
Cabin Depth	CD	1100	1200	1300	1200	1500	1650	(mm)
Shaft Width	SW	1090	1290	1490	1690	1690	1690	(mm)
Shaft Depth	SD	1280	1380	1480	1380	1680	1830	(mm)
Door Opening	DO1	550	700	900	900	900	900	(mm)
Door Opening	DO2	900	900	900	900	900	900	(mm)

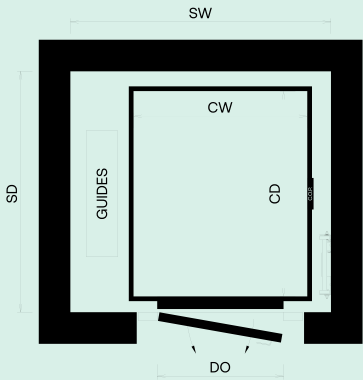
THROUGH-CAR DOOR

Rated Load	Q	250	320	320	400	450	500(max)	(kg)
Cabin Width	CW	600	800	800	1100	1200	1200	(mm)
Cabin Depth	CD	1100	1200	1300	1400	1500	1650	(mm)
Shaft Width	SW	1120	1270	1270	1570	1670	1670	(mm)
Shaft Depth	SD	1300	1400	1500	1600	1700	1850	(mm)
Door Opening	DO	600	700	700	900	900	900	(mm)

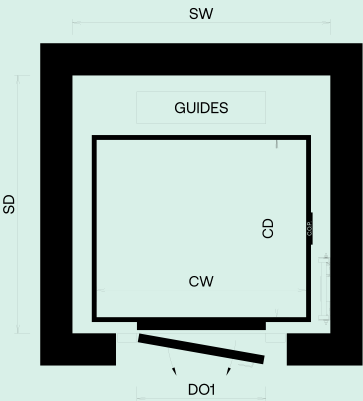


Doppler IKOS SERIES

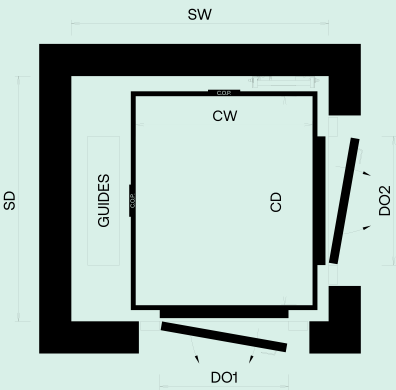
SINGLE DOOR



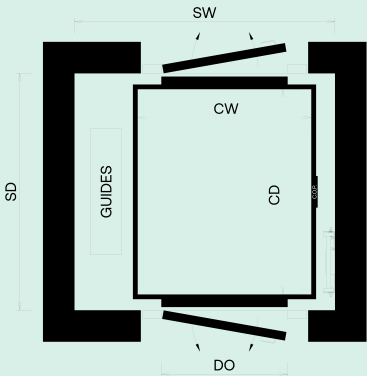
SINGLE DOOR



ADJACENT DOORS



THROUGH-CAR DOOR





Masonry-Automatic Doors

SINGLE DOOR

Rated Load	Q	250	320	400	400	450	500(max)	(kg)
Cabin Width	CW	700	800	1000	1100	1200	1200	(mm)
Cabin Depth	CD	1200	1200	1300	1400	1400	1650	(mm)
Shaft Width	SW	1170	1270	1470	1570	1670	1670	(mm)
Shaft Depth	SD	1530	1530	1630	1730	1730	1980	(mm)
Door Opening	DO	650	700	850	900	950	950	(mm)

SINGLE DOOR

Rated Load	Q	250	320	400	400	450	500(max)	(kg)
Cabin Width	CW	1050	1300	1200	1100	1400	1650	(mm)
Cabin Depth	CD	600	800	1200	1200	1200	1100	(mm)
Shaft Width	SW	1185	1435	1335	1235	1535	1785	(mm)
Shaft Depth	SD	1265	1465	1865	1765	1865	1765	(mm)
Door Opening	DO	650	800	700	650	850	900	(mm)

ADJACENT DOORS

Rated Load	Q	320	320	400	400	400	500(max)	(kg)
Cabin Width	CW	1000	1000	1100	1200	1100	1100	(mm)
Cabin Depth	CD	1300	1200	1200	1200	1400	1650	(mm)
Shaft Width	SW	1665	1665	1765	1865	1765	1765	(mm)
Shaft Depth	SD	1655	1555	1555	1555	1755	2005	(mm)
Door Opening	DO1	750	700	750	800	850	850	(mm)
Door Opening	DO2	750	750	750	800	800	800	(mm)

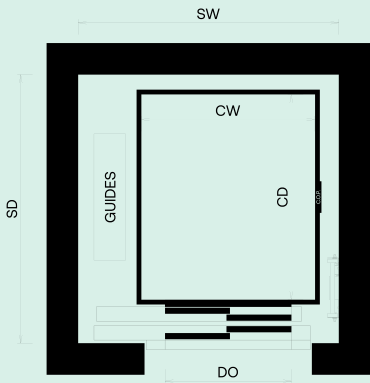
THROUGH-CAR DOOR

Rated Load	Q	250	320	320	400	450	500(max)	(kg)
Cabin Width	CW	700	800	1000	1100	1200	1200	(mm)
Cabin Depth	CD	1200	1200	1300	1400	1400	1650	(mm)
Shaft Width	SW	1170	1270	1470	1570	1670	1670	(mm)
Shaft Depth	SD	1750	1750	1850	1950	1950	2200	(mm)
Door Opening	DO	650	700	850	900	950	950	(mm)

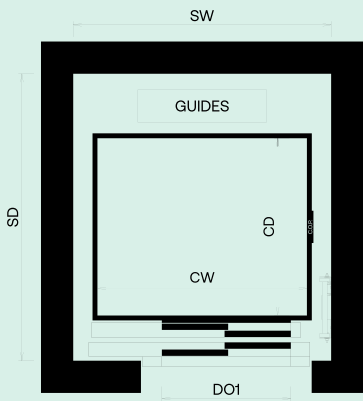


Doppler IKOS SERIES

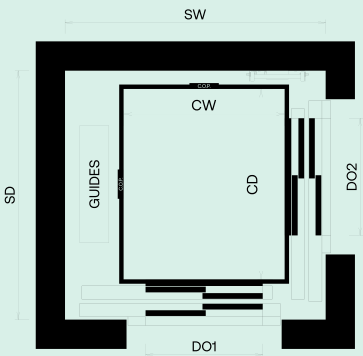
SINGLE DOOR



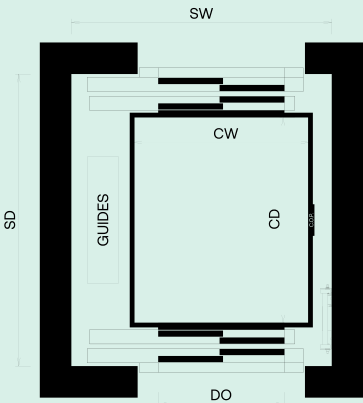
SINGLE DOOR



ADJACENT DOORS



THROUGH-CAR DOOR





Steel Shaft-Swing Doors

SINGLE DOOR

Rated Load	Q	250	320	320	400	450	500(max)	(kg)
Cabin Width	CW	600	800	900	1100	1200	1200	(mm)
Cabin Depth	CD	1120	1200	1400	1400	1500	1650	(mm)
Shaft Width	SW	1240	1390	1490	1690	1790	1790	(mm)
Shaft Depth	SD	1314	1462	1662	1662	1762	1912	(mm)
Door Opening	DO	600	700	800	900	900	900	(mm)

SINGLE DOOR

Rated Load	Q	250	320	400	400	450	500(max)	(kg)
Cabin Width	CW	950	950	1300	1400	1500	1650	(mm)
Cabin Depth	CD	600	900	1000	1000	1200	1200	(mm)
Shaft Width	SW	1257	1257	1529	1629	1729	1879	(mm)
Shaft Depth	SD	1223	1523	1623	1623	1823	1823	(mm)
Door Opening	DO	800	800	900	900	900	1000	(mm)

ADJACENT DOORS

Rated Load	Q	250	320	400	400	450	500(max)	(kg)
Cabin Width	CW	600	800	1000	1200	1200	1200	(mm)
Cabin Depth	CD	1100	1200	1300	1200	1500	1650	(mm)
Shaft Width	SW	1223	1423	1623	1823	1823	1823	(mm)
Shaft Depth	SD	1387	1487	1587	1487	1787	1937	(mm)
Door Opening	DO1	550	700	900	900	900	900	(mm)
Door Opening	DO2	900	900	900	900	900	900	(mm)

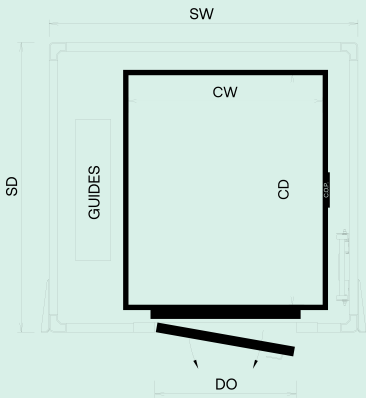
THROUGH-CAR DOOR

Rated Load	Q	250	320	320	400	450	500(max)	(kg)
Cabin Width	CW	600	800	800	1100	1200	1200	(mm)
Cabin Depth	CD	1100	1200	1300	1400	1500	1650	(mm)
Shaft Width	SW	1240	1390	1390	1690	1790	1790	(mm)
Shaft Depth	SD	1420	1520	1620	1720	1820	1970	(mm)
Door Opening	DO	600	700	700	900	900	900	(mm)

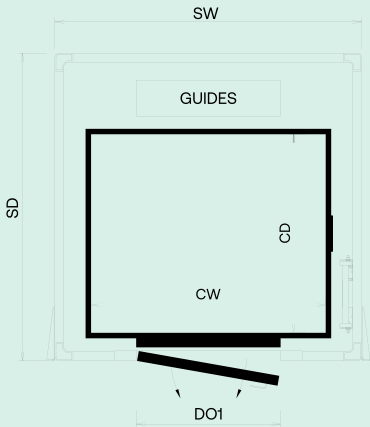


Doppler IKOS SERIES

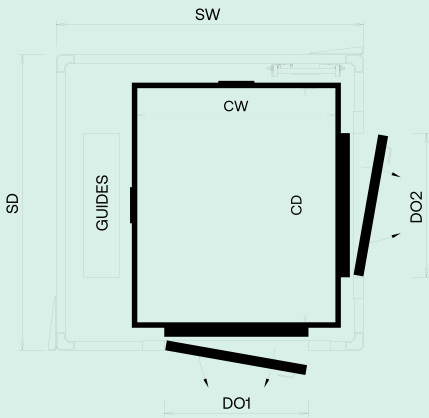
SINGLE DOOR



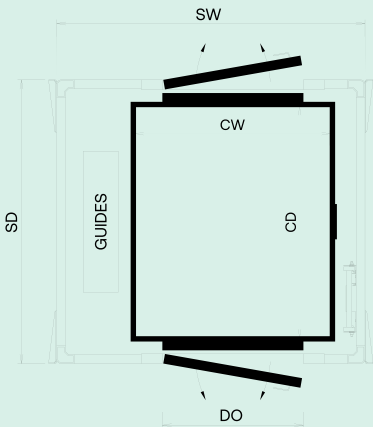
SINGLE DOOR



ADJACENT DOORS



THROUGH-CAR DOOR





Steel Shaft-Automatic Doors

SINGLE DOOR

Rated Load	Q	250	320	400	450	450	500(max)	(kg)
Cabin Width	CW	700	800	1000	1100	1200	1200	(mm)
Cabin Depth	CD	1200	1200	1300	1400	1400	1650	(mm)
Shaft Width	SW	1290	1390	1590	1690	1790	1790	(mm)
Shaft Depth	SD	1624	1624	1724	1824	1824	2074	(mm)
Door Opening	DO	600	700	800	900	950	950	(mm)

SINGLE DOOR

Rated Load	Q	250	320	400	400	450	500(max)	(kg)
Cabin Width	CW	1050	1300	1200	1100	1400	1650	(mm)
Cabin Depth	CD	600	800	1200	1100	1200	1100	(mm)
Shaft Width	SW	1279	1529	1429	1329	1629	1879	(mm)
Shaft Depth	SD	1385	1585	1985	1885	1985	1885	(mm)
Door Opening	DO	600	800	700	650	850	850	(mm)

ADJACENT DOORS

Rated Load	Q	320	320	400	400	450	500(max)	(kg)
Cabin Width	CW	1000	1000	1100	1200	1100	1100	(mm)
Cabin Depth	CD	1300	1200	1200	1200	1400	1650	(mm)
Shaft Width	SW	1785	1785	1885	1985	1885	1885	(mm)
Shaft Depth	SD	1749	1649	1649	1649	1849	2099	(mm)
Door Opening	DO1	750	700	750	800	850	850	(mm)
Door Opening	DO2	750	750	750	800	800	800	(mm)

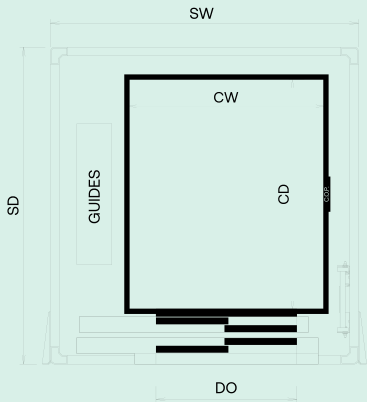
THROUGH-CAR DOOR

Rated Load	Q	250	320	320	400	450	500(max)	(kg)
Cabin Width	CW	700	800	1000	1100	1200	1200	(mm)
Cabin Depth	CD	1200	1200	1300	1400	1400	1650	(mm)
Shaft Width	SW	1290	1390	1590	1690	1790	1790	(mm)
Shaft Depth	SD	1844	1844	1944	2044	2044	2294	(mm)
Door Opening	DO	600	700	850	900	950	950	(mm)

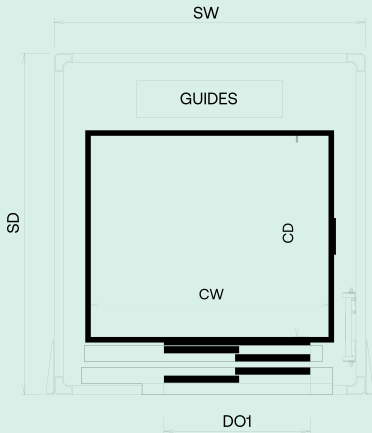


Doppler IKOS SERIES

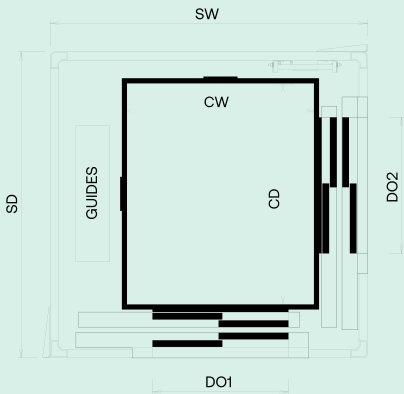
SINGLE DOOR



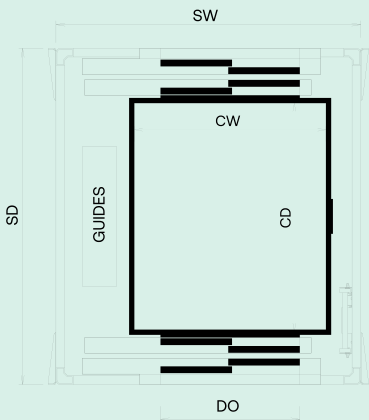
SINGLE DOOR



ADJACENT DOORS



THROUGH-CAR DOOR





SEEN IS BETTER THAN  
IMAGINED. EXPERIENCE  
THE DESIGN OF YOUR  
HOME LIFT ON A DEEPER  
LEVEL AND BRING YOUR  
VISION TO LIFE

WITH THE  
ONLINE CABIN CONFIGURATOR.



OUR EXPERTISE IS EAGER  
TO LISTEN AND RESPOND.  
GET IN TOUCH.

HEADQUARTERS & FACTORY

POLYKASTRO  
INDUSTRIAL PARK  
61200 GREECE

+30 23430 54000 (T)  
INFO@DOPPLER.GR (E)

THESSALONIKI OFFICE & SHOWROOM

5 GIALOPSOU EKTOROS ST.  
56224 EVOSMOS  
THESSALONIKI GREECE

+30 23430 54000 (T)

ATHENS BRANCH

12 LASSANI ST.  
12132 PERISTERI  
ATHENS GREECE

+30 210 341 6210 (T)  
INFOATH@DOPPLER.GR (E)

WWW.DOPPLER.GR (W)







