

Doppler

Moving together

DIVE INTO OUR WORLD
DOPPLER 2023



MOVING WITH OPTIONS/ MOVING WITH LEADING-EDGE SOLUTIONS/
MOVING COMPETITIVELY/ HUMAN TOGETHER/ GLOBAL TOGETHER
ADVANCING ENGINEERING TOGETHER/ MOVING TOGETHER/ FUTURE-
FORWARD TOGETHER/ POWERFUL TOGETHER

OUR ETHOS

We are a life driven elevator manufacturer. Powered by the understanding of motion we invent solutions.

We believe that engineering excellence has the power to transform the everyday life. This is why we employ ever-evolving innovative systems that answer to bespoke lift solutions of exacting standards.

Through boundless vision, ease and expertise, we deliver unmatched value with unparalleled care that supports our customer-centric approach. We're moving forward, we're moving together.





Doppler is made of:

- ① Culture: Voices are heard and ideas matter
- ② Customer success: We listen and talk about needs, desires, wants
- ③ Anthropomorphic approach, diverse, and inclusive
- ④ Performance mission driven by our ethos
- ⑤ Change, curiosity, extroversion

Integrated elevator solutions

- ① Standard and out of standard lift design and manufacturing range.
- ② Lift modernization
- ③ Spare parts
- ④ Training and consulting by a multilingual engineering team
- ⑤ Installation, maintenance, and commissioning by authorized associates and distributors

EUROPEAN REGULATIONS

EN ISO 9001:2015
EN 81-20/50/21
ISO 14001:2015
ISO 45001:2018

Inhouse R&D Dpt
24.7 technical support



TYPICAL

- Passenger lifts
- Car lifts
- Dumbwaiters
- Platforms
- Goods lifts
- Cargo lifts

BESPOKE

- Inclined lifts
- Rooftop solution
- Passenger lifts
- Lift modernization
- Schema Shaft
- Escalators
- Parking systems
- Marine solutions

SERVICES

- ReNaissance
- Spare parts
- IoT lift monitoring

HORIZONTAL

- Escalators
- Moving walks

Doppler



Moving together





Doppler



10

Moving together





Doppler



Moving together







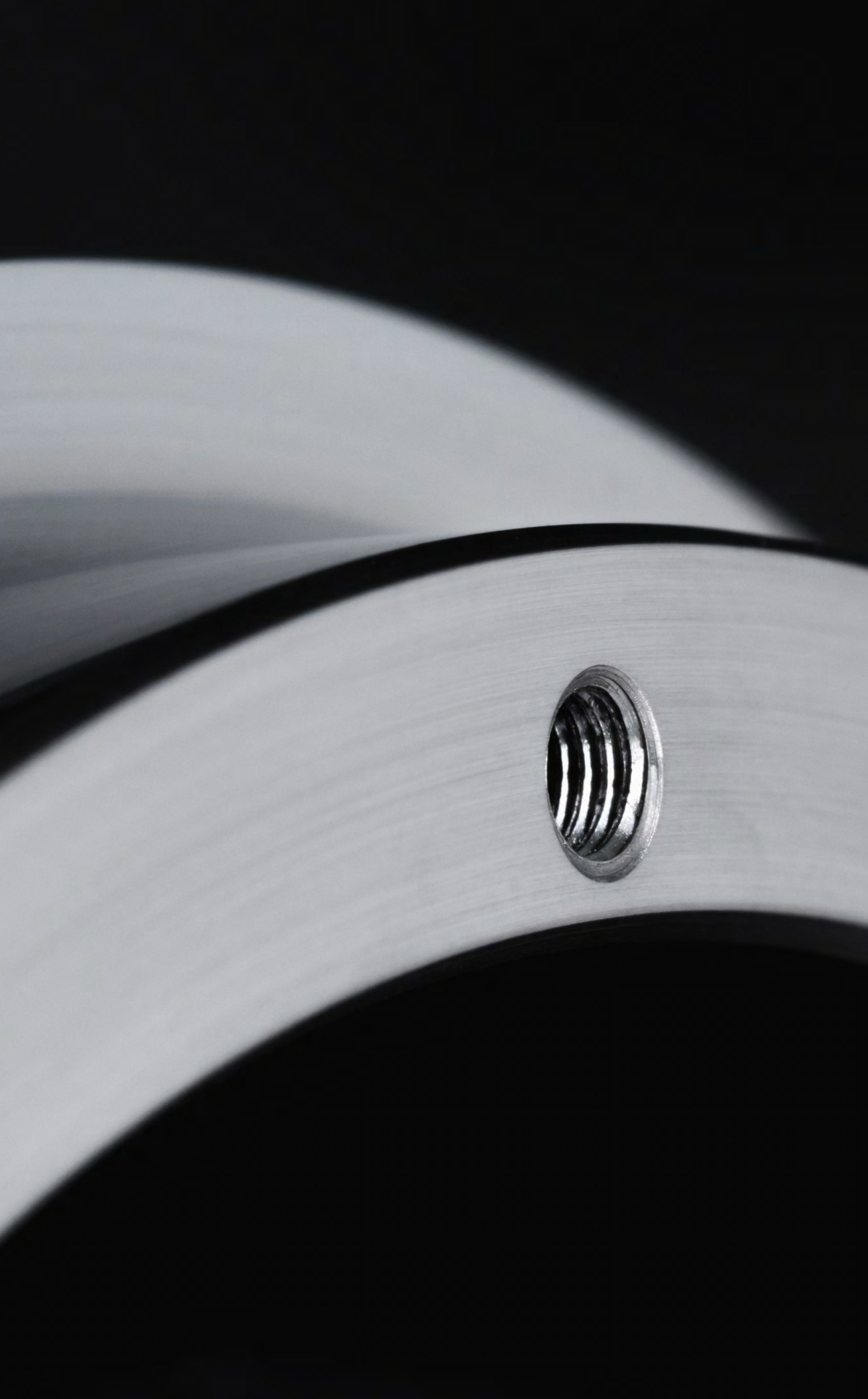
PRINCIPLES

Safety
Quality
Inclusion
Innovation
Efficiency

15

VALUES

Teamwork
Ethics
Care
Customer
Initiative



Australia	Chile	Azerbaijan	Algeria	Albania	Moldova
	Ecuador	Bahrain	Angola	Armenia	Montenegro
	Mexico	Bangladesh	Cameroon	Austria	Netherlands
	Panama	China	Democratic	Belarus	North
	Peru	India	Republic of	Belgium	Macedonia
		Iran	The Congo	Bosnia And	Norway
		Iraq	Djibouti	Herzegovina	Poland
		Jordan	Egypt	Bulgaria	Romania
		Kuwait	Ethiopia	Croatia	Russia
		Kyrgyzstan	Kenya	Cyprus	Serbia
		Lebanon	Nigeria	Czech	Slovakia
		Libya	Palestine	Republic	Slovenia
		Oman	Southern	Denmark	Spain
		Pakistan	Africa	Estonia	Sweden
		Qatar	Sudan	Finland	Switzerland
		Réunion	Tanzania	France	Turkey
		Saudi Arabia	Tunisia	Georgia	Ukraine
		Sri Lanka	Uganda	Germany	UK
		Syria	Zimbabwe	Greece	
		Turkmenistan		Hungary	
		United Arab		Ireland	
		Emirates		Israel	
		Uzbekistan		Italy	
		Yemen		Kazakhstan	
				Latvia	
				Lithuania	
				Malta	

- ① Board of Directors
- ② Managing Director–Legal Advisors
- ③ Departments

Technical	R&D / Industrial Design / Cabin Design / Electrical R&D
Commercial	Marketing / Sales / Customer care
Production	Production Planning / Production Line / Quality Control
IS / IT	Software Development / Network Administration
Logistics & Procurement	Logistics / Procurement
Finance	Accounting / Internal Control / Invoicing
After Sales & Training	After Sales Support / Training
Human Resources	

18

Doppler’s team consists of more than 200 well-trained electrical and mechanical engineers, technicians, and office employees updated as to the new technologies in the design and development of lift solutions.

Native speaking:
Greek/ English/ German/
French/Arabic/Spanish

20+

years of
experience

250

local based partners
worldwide

1.5k

public projects
completed

20k

complete lift packages
installed worldwide

Milestones

2000	Year of Establishment
2001	Athens Branch Launch/Construction of First Panoramic Lift
2004	First Installation of Doppler's Escalator
2007	Doppler is Listed on the Athens Stock Exchange
2008	Cyprus Branch Launch
2011	Completion of the Maersk Reacher Offshore Oil Platform Project
2012	Trafalgar Square Lift Installation for the Olympics
2015	Completion of the pedestrian bridges at the Al Sufouh Tram Project
2017	First Prize in Special Projects Elevator World Awards MAERSK oil rig Northern Sea Netherlands
2018	Introduction of the Elli Model
2020	First EN81-22 certified Inclined lift in Opatija, Croatia
2021	Rebranding, Digital Transformation, IOT RLM, Client's Portal
2023	First Prize Special Lift Rooftop Solution Dr. Pixley South Africa

In our multi-decade activity, we are proud of every project that has entered Doppler's portfolio and the bespoke solutions our clients have received, transforming this way businesses and residencies alike for years to come.

In the next pages, we unfold only some of Doppler's selected highlights as we are constantly moving forward and moving together.

Doppler

Moving forward



22

OPUS BUILDING, ATRIUM
RESTAURANT, DUBAI
FOCUS LH
2 STOPS
1000KG CAPACITY
1M/S SPEED
4260MM TRAVEL

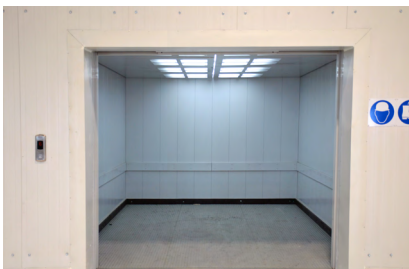
1
BESPOKE





23

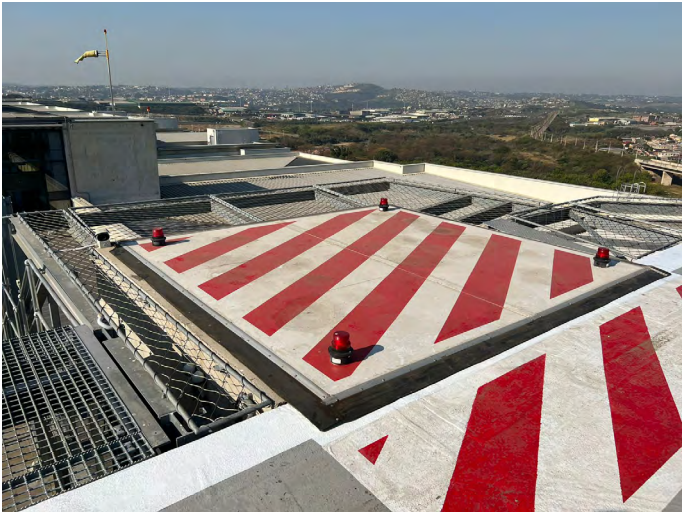
HELLENIC CABLES
FULGOR
HEAVY DUTY
CARGO ELEVATOR
CAPACITY 8000KG
SPEED 0.5
TRAVEL 47000
TRACTION MR



2
CARGO

Doppler

Moving forward



24

KWA MASHU DR PIXLEY
KA ISAKA HOSPITAL
SOUTH AFRICA
CAR SPEED 0.5M/S
CAPACITY 1600KG
TRAVEL 4252MM
HYDRAULIC

3
ROOFTOP



25

FOUR WINDS
RESIDENCIES
OPATIJA, CROATIA
TRACTION, MR
SQUARE PANORAMIC
450KG
6 PASSENGERS
1M/S
2 STOPS
ROPING 1:2
TRAVEL 17000MM

4
INCLINED

Doppler

Moving forward



26

MAERSK OIL RIG,
NORTHERN SEA
ELEVATOR MODEL
HYDRAULIC MRL
NO OF STOPS 5
CAPACITY 1250KG
CAR SPEED 0.63M/S
TRAVEL 12800MM

5
MARINE



SEEN IS BETTER THAN
IMAGINED. EXPERIENCE
THE DESIGN OF YOUR
HOME LIFT ON A DEEPER
LEVEL AND BRING YOUR
VISION TO LIFE

WITH THE
ONLINE CABIN CONFIGURATOR.



OUR EXPERTISE IS EAGER
TO LISTEN AND RESPOND.
GET IN TOUCH.

HEADQUARTERS & FACTORY

POLYKASTRO
INDUSTRIAL PARK
61200 GREECE

+30 23430 54000 (T)
INFO@DOPPLER.GR (E)

THESSALONIKI OFFICE & SHOWROOM

5 GIALOPSOU EKTOROS ST.
56224 EVOSMOS
THESSALONIKI GREECE

+30 23160 10605 (T)

ATHENS BRANCH

12 LASSANI ST.
12132 PERISTERI
ATHENS GREECE

+30 210 341 6210 (T)
INFOATH@DOPPLER.GR (E)

WWW.DOPPLER.GR (W)

